

# ZIP7 antibody

Catalog Number: 117061

## Product name

ZIP7 antibody

IP: 1:200-1:2000

IHC: 1:20-1:200

## Specificity

Human,Mouse,Rat; other species not tested.

## Antibody description

ZIP7 Rabbit Polyclonal antibody. Positive IHC detected in human kidney tissue, human placenta tissue. Positive IP detected in mouse brain tissue. Positive WB detected in mouse liver tissue, MCF7 cells, rat liver tissue. Observed molecular weight by Western-blot: 50kd,56kd

## Preparation

This antibody was obtained by immunization of ZIP7 recombinant protein (Accession Number: NM\_006979). Purification method: Antigen affinity purified.

## Formulation

PBS with 0.02% sodium azide and 50% glycerol pH 7.3.

## Storage

Store at -20°C. DO NOT ALIQUOT

## Clonality

Polyclonal

## Ig Type

Rabbit IgG

## Applications

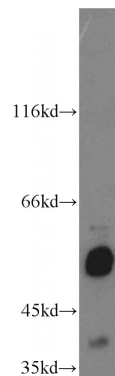
ELISA, WB, IHC, IP

## Dilutions

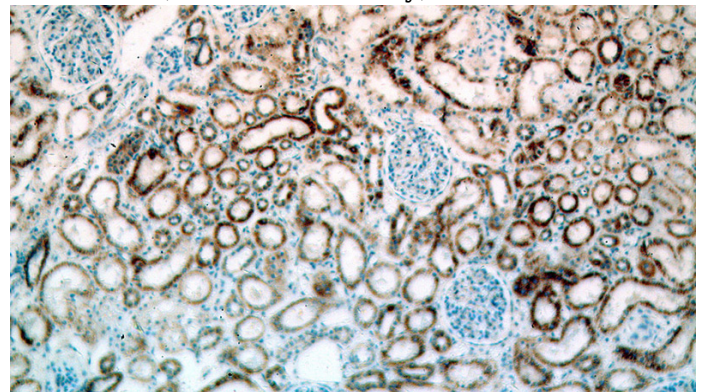
Recommended Dilution:

WB: 1:1000-1:10000

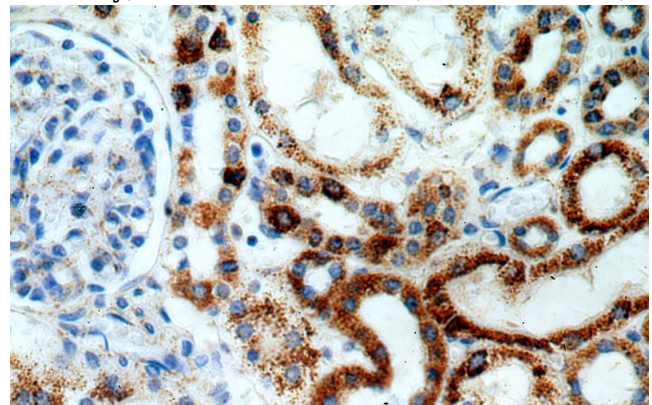
## Validations



mouse liver tissue were subjected to SDS PAGE followed by western blot with Catalog No:117061(SLC39A7 antibody) at dilution of 1:500



Immunohistochemical of paraffin-embedded human kidney using Catalog No:117061(SLC39A7 antibody) at dilution of 1:100 (under 10x lens)



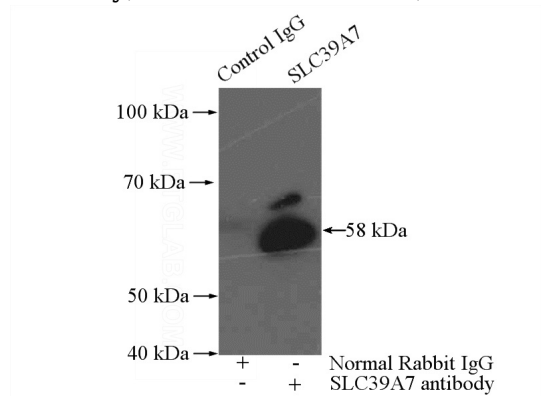
Immunohistochemical of paraffin-embedded human kidney using Catalog No:117061(SLC39A7

# ZIP7 antibody

Catalog Number: 117061

---

antibody) at dilution of 1:100 (under 40x lens)



IP Result of anti-SLC39A7 (IP:Catalog No:117061, 4ug; Detection:Catalog No:117061 1:500) with mouse brain tissue lysate 4000ug.