

# Mouse SELP / P Selectin (Fc Tag) recombinant protein



Catalog Number: 503061

## General Information

### Gene Name Synonym

CD62 antigen-like family member P; Granule membrane protein 140; Leukocyte-endothelial cell adhesion molecule 3; Platelet activation dependent granule-external membrane protein

### Protein Construction

A DNA sequence encoding the mouse SELP (NP\_035477.1) (Met1-Ala709) was expressed with the Fc region of human IgG1 at the C-terminus.

### Organism

Mouse

### Expression Host

Human Cells

## QC Testing

### Activity

Measured by the ability of the immobilized protein to support the adhesion of U937 human histiocytic lymphoma cells. When  $5 \times 10^4$  cells/well are added to mouse SELP/Fc Chimera coated plates (10  $\mu\text{g/mL}$  with 100  $\mu\text{L/well}$ ), > 60% cells will adhere for 1 hour incubation at 37°C.

### Purity

> 85 % as determined by SDS-PAGE

### Endotoxin

< 1.0 EU per  $\mu\text{g}$  of the protein as determined by the LAL method

### Stability

Samples are stable for up to twelve months from date of receipt at -70°C

### Predicted N terminal

Trp 42

### Molecular Mass

The recombinant mouse SELP comprises 909 amino acids and has a predicted molecular mass of 99.6 kDa. The apparent molecular mass of the protein is approximately 134.5 kDa in SDS-PAGE under reducing conditions.

### Formulation

Lyophilized from sterile PBS, pH 7.4.

1. 5 % trehalose and mannitol are added as protectants before lyophilization.
2. Please contact us for any concerns or special requirements.

## Usage Guide

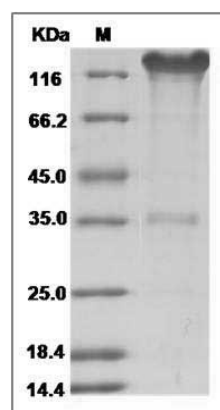
### Storage

Store it under sterile conditions at -20°C to -80°C. It is recommended that the protein be aliquoted for optimal storage. Avoid repeated freeze-thaw cycles.

### Reconstitution

Adding sterile water, prepare a stock solution of 0.25 mg/ml. Concentration is measured by UV-Vis.

### SDS-PAGE



Mouse SELP / selectin P / P-selectin Protein (Fc Tag) SDS-PAGE