

Human PDE1B (His & GST Tag) recombinant protein



Catalog Number: 502061

General Information

Gene Name Synonym

63 kDa Cam-PDE

Protein Construction

A DNA sequence encoding the human PDE1B long isoform (Q01064-1) (Met 1-Asp 536) was fused with the N-terminal polyhistidine-tagged GST tag at the N-terminus.

Organism

Human

Expression Host

Baculovirus-Insect Cells

QC Testing

Purity

> 94 % as determined by SDS-PAGE

Endotoxin

< 1.0 EU per μg of the protein as determined by the LAL method

Stability

Samples are stable for up to twelve months from date of receipt at -70°C

Predicted N terminal

Met

Molecular Mass

The recombinant human PDE1B/GST chimera

consists of 773 amino acids and has a calculated molecular mass of 89.2 kDa. It migrates as an approximately 75 kDa band in SDS-PAGE under reducing conditions.

Formulation

Lyophilized from sterile 50mM Tris, 100mM NaCl, pH 8.0

1. 5 % trehalose and mannitol are added as protectants before lyophilization.
2. Please contact us for any concerns or special requirements.

Usage Guide

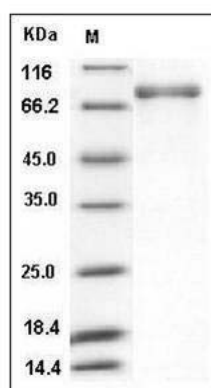
Storage

Store it under sterile conditions at -20°C to -80°C . It is recommended that the protein be aliquoted for optimal storage. Avoid repeated freeze-thaw cycles.

Reconstitution

Adding sterile water, prepare a stock solution of 0.25 mg/ml. Concentration is measured by UV-Vis.

SDS-PAGE



Human PDE1B Protein (His & GST Tag) SDS-PAGE