

GPD1 antibody



Catalog Number: 111061

Product name

GPD1 antibody

Specificity

Human, Mouse, Rat; other species not tested.

Antibody description

GPD1 Rabbit Polyclonal antibody. Positive WB detected in HepG2 cells. Positive IF detected in HepG2 cells. Observed molecular weight by Western-blot: 38-42 kDa

Preparation

This antibody was obtained by immunization of GPD1 recombinant protein (Accession Number: NM_005276). Purification method: Antigen affinity purified.

Formulation

PBS with 0.02% sodium azide and 50% glycerol pH 7.3.

Storage

Store at -20°C. DO NOT ALIQUOT

Clonality

Polyclonal

Ig Type

Rabbit IgG

Applications

ELISA, WB, IF

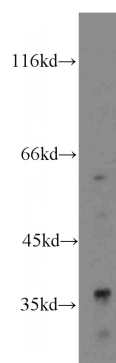
Dilutions

Recommended Dilution:

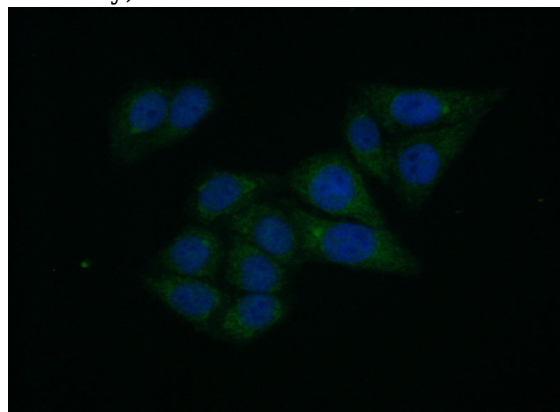
WB: 1:200-1:1000

IF: 1:20-1:200

Validations



HepG2 cells were subjected to SDS PAGE followed by western blot with Catalog No:111061(GPD1 antibody) at dilution of 1:400



Immunofluorescent analysis of (10% Formaldehyde) fixed HepG2 cells using Catalog No:111061(GPD1 Antibody) at dilution of 1:50 and Alexa Fluor 488-conjugated AffiniPure Goat Anti-Rabbit IgG(H+L)