

# SUV39H1 antibody



Catalog Number: 115751

## Product name

SUV39H1 antibody

## Specificity

Human, Mouse, Rat; other species not tested.

## Antibody description

SUV39H1 Rabbit Polyclonal antibody. Positive WB detected in HepG2 cells, C6 cells, HEK-293 cells, HeLa cells, mouse small intestine tissue. Positive IP detected in HeLa cells. Observed molecular weight by Western-blot: 48-50kd

## Preparation

This antibody was obtained by immunization of SUV39H1 recombinant protein (Accession Number: NM\_003173). Purification method: Antigen affinity purified.

## Formulation

PBS with 0.1% sodium azide and 50% glycerol pH 7.3.

## Storage

Store at -20°C. DO NOT ALIQUOT

## Clonality

Polyclonal

## Ig Type

Rabbit IgG

## Applications

ELISA, WB, IP

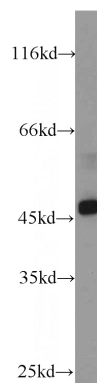
## Dilutions

Recommended Dilution:

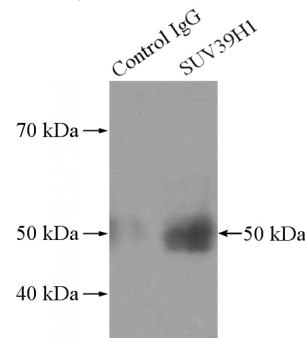
WB: 1:500-1:5000

IP: 1:200-1:2000

## Validations



HepG2 cells were subjected to SDS PAGE followed by western blot with Catalog No:115751(SUV39H1 antibody) at dilution of



Control IgG  
SUV39H1

+	-	Normal Rabbit IgG
-	+	SUV39H1 Antibody

1:1000

IP Result of anti-SUV39H1 (IP:Catalog No:115751, 4ug; Detection:Catalog No:115751 1:500) with HeLa cells lysate 2800ug.