

RNF20 antibody

Catalog Number: 114751

Product name

RNF20 antibody

WB: 1:1000-1:10000

IP: 1:200-1:2000

Specificity

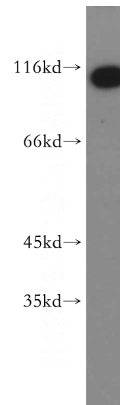
Human, Mouse, Rat; other species not tested.

IF: 1:10-1:100

Antibody description

RNF20 Rabbit Polyclonal antibody. Positive WB detected in HeLa cells, A431 cells, HEK-293 cells, Jurkat cells, MCF7 cells, MCF-7 cells, mouse kidney tissue, mouse liver tissue, rat liver tissue. Positive IP detected in HeLa cells. Positive IF detected in HepG2 cells, Hela cells. Observed molecular weight by Western-blot: 114 kDa

Validations



Preparation

This antibody was obtained by immunization of RNF20 recombinant protein (Accession Number: NM_019592). Purification method: Antigen affinity purified.

HeLa cells were subjected to SDS PAGE followed by western blot with Catalog No:114751(RNF20 antibody) at dilution of 1:500

Formulation

PBS with 0.02% sodium azide and 50% glycerol pH 7.3.

Storage

Store at -20°C. DO NOT ALIQUOT

Clonality

Polyclonal

Ig Type

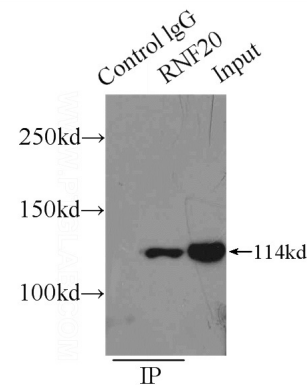
Rabbit IgG

Applications

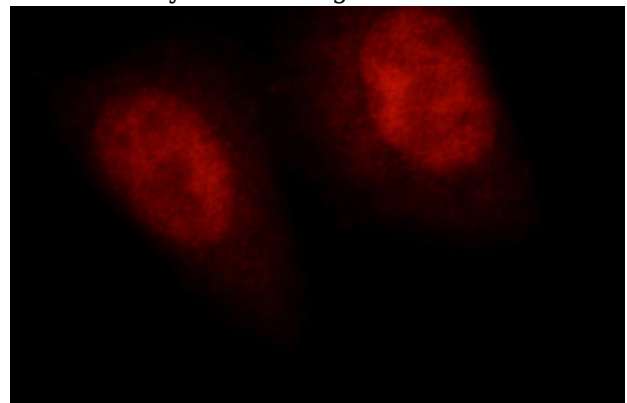
ELISA, WB, IF, IP

Dilutions

Recommended Dilution:



IP Result of anti-RNF20 (IP:Catalog No:114751, 3ug; Detection:Catalog No:114751 1:500) with HeLa cells lysate 2000ug.



RNF20 antibody



Catalog Number: 114751

Immunofluorescent analysis of HepG2 cells, using RNF20 antibody Catalog No:114751 at 1:25

dilution and Rhodamine-labeled goat anti-rabbit IgG (red).