

# MPP7 antibody

Catalog Number: 112751

## Product name

MPP7 antibody

IP: 1:200-1:2000

IHC: 1:20-1:200

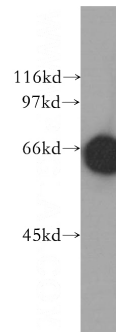
## Specificity

Human, Mouse, Rat; other species not tested.

## Validations

## Antibody description

MPP7 Rabbit Polyclonal antibody. Positive IHC detected in human ovary tumor tissue. Positive WB detected in HeLa cells, Raji cells. Positive IP detected in HeLa cells. Observed molecular weight by Western-blot: 66kd



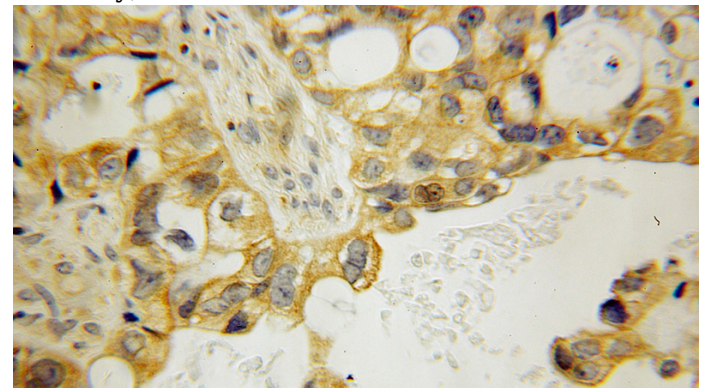
## Preparation

This antibody was obtained by immunization of MPP7 recombinant protein (Accession Number: XM\_047424647). Purification method: Antigen affinity purified.

HeLa cells were subjected to SDS PAGE followed by western blot with Catalog No:112751(MPP7 antibody) at dilution of 1:500

## Formulation

PBS with 0.1% sodium azide and 50% glycerol pH 7.3.



## Storage

Store at -20°C. DO NOT ALIQUOT

## Clonality

Polyclonal

Immunohistochemical of paraffin-embedded human ovary tumor using Catalog No:112751(MPP7 antibody) at dilution of 1:100 (under 10x lens)

## Ig Type

Rabbit IgG

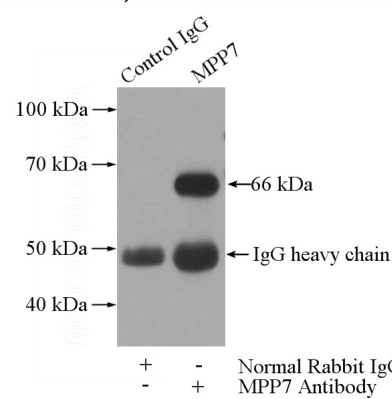
## Applications

ELISA, WB, IHC, IP

## Dilutions

Recommended Dilution:

WB: 1:1000-1:10000



IP Result of anti-MPP7 (IP:Catalog No:112751,

# MPP7 antibody



Catalog Number: 112751

---

4ug; Detection:Catalog No:112751 1:500) with HeLa cells lysate 2800ug.