

# Rhesus IGFBP1/IGFBP-1 (His Tag) recombinant protein



Catalog Number: 500751

## General Information

### Protein Construction

A DNA sequence encoding the rhesus IGFBP1 (XP\_001085935.2) (Met23-Asn281) was expressed, fused with a polyhistidine tag at the C-terminus.

### Organism

Rhesus

### Expression Host

Human Cells

## QC Testing

### Activity

Measured by its binding ability in a functional ELISA.

Immobilized Rhesus IGFBP1-His at 10 µg/ml (100 µl/well) can bind biotinylated human IGF1 (Cat:10598-H24E) with a linear range of 12.5-100 ng/ml.

### Purity

> 98 % as determined by SDS-PAGE

### Endotoxin

< 1.0 EU per µg of the protein as determined by the LAL method

### Stability

Samples are stable for up to twelve months from date of receipt at -70°C

### Predicted N terminal

Ala 48

## Molecular Mass

The recombinant rhesus comprises 245 amino acids and has a calculated molecular mass of 26.7 KDa.

## Formulation

Lyophilized from sterile PBS, pH 7.4

1. 5 % trehalose and mannitol are added as protectants before lyophilization.

2. Please contact us for any concerns or special requirements.

## Usage Guide

### Storage

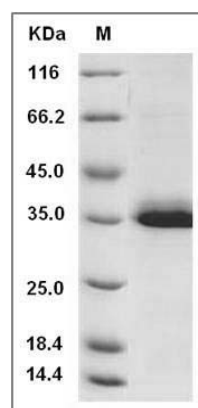
Store it under sterile conditions at -20°C to -80°C.

It is recommended that the protein be aliquoted for optimal storage. Avoid repeated freeze-thaw cycles.

### Reconstitution

Adding sterile water, prepare a stock solution of 0.25 mg/ml. Concentration is measured by UV-Vis.

## SDS-PAGE



Cynomolgus IGFBP1 Protein (His Tag) SDS-PAGE