

# OPA3 antibody

Catalog Number: 113351

## Product name

OPA3 antibody

IP: 1:200-1:1000

IHC: 1:20-1:200

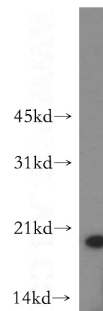
## Specificity

Human, Mouse, Rat; other species not tested.

## Validations

## Antibody description

OPA3 Rabbit Polyclonal antibody. Positive WB detected in HeLa cells, HEK-293 cells, human kidney tissue, Jurkat cells, mouse thymus tissue. Positive IP detected in HeLa cells. Positive IHC detected in human kidney tissue. Observed molecular weight by Western-blot: 20 kDa



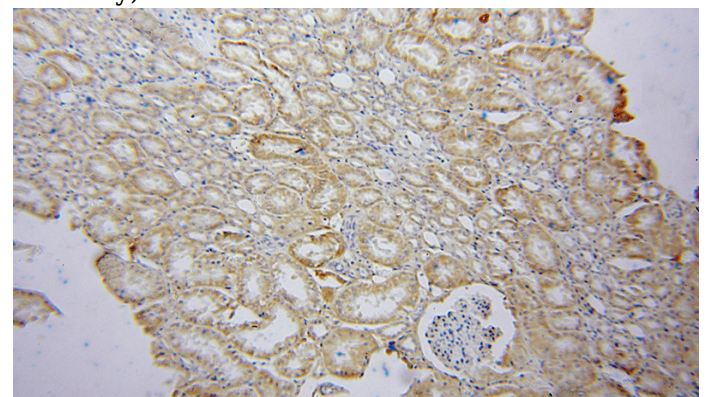
## Preparation

This antibody was obtained by immunization of OPA3 recombinant protein (Accession Number: NM\_025136). Purification method: Antigen affinity purified.

HeLa cells were subjected to SDS PAGE followed by western blot with Catalog No:113351(OPA3 antibody) at dilution of 1:400

## Formulation

PBS with 0.02% sodium azide and 50% glycerol pH 7.3.



## Storage

Store at -20°C. DO NOT ALIQUOT

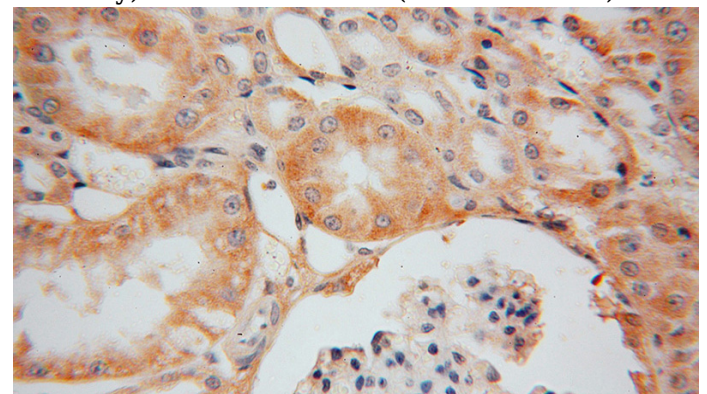
## Clonality

Polyclonal

Immunohistochemical of paraffin-embedded human kidney using Catalog No:113351(OPA3 antibody) at dilution of 1:50 (under 10x lens)

## Ig Type

Rabbit IgG



## Applications

ELISA, IHC, WB, IP

## Dilutions

Recommended Dilution:

WB: 1:200-1:1000

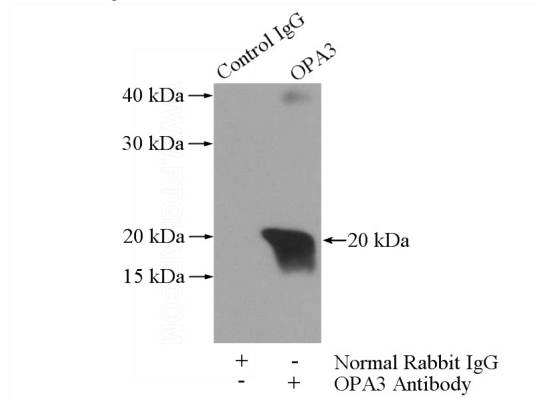
Immunohistochemical of paraffin-embedded human kidney using Catalog No:113351(OPA3

# OPA3 antibody

Catalog Number: 113351

---

antibody) at dilution of 1:50 (under 40x lens)



IP Result of anti-OPA3 (IP:Catalog No:113351, 3ug; Detection:Catalog No:113351 1:400) with HeLa cells lysate 2440ug.