

DKC1 Polyclonal Antibody



Catalog Number: 161351

Product name

DKC1 Polyclonal Antibody

Specificity

Human, Mouse

Antibody description

Polyclonal antibody to DKC1

Preparation

Antigen: Recombinant fusion protein containing a sequence corresponding to amino acids 1-180 of human DKC1 (NP_001354.1).

Formulation

PBS with 0.02% sodium azide, 50% glycerol, pH7.3.

Storage

Store at -20°C. Avoid freeze / thaw cycles.

Clonality

Polyclonal

Ig Type

Rabbit IgG

Applications

WB, IHC, IF

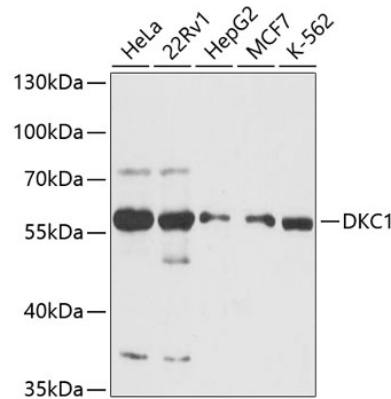
Dilutions

WB 1:500 - 1:2000

IHC 1:50 - 1:100

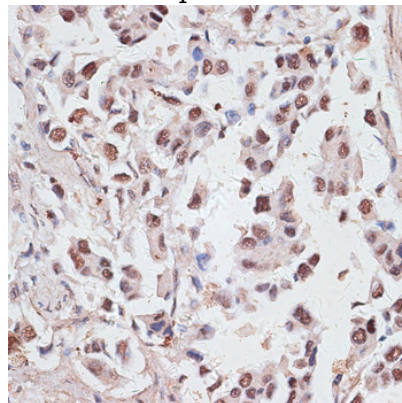
IF 1:50 - 1:100

Validations



Western blot - DKC1 Polyclonal Antibody

Western blot analysis of extracts of various cell lines, using DKC1 antibody at 1:3000 dilution. Secondary antibody: HRP Goat Anti-Rabbit IgG (H+L) at 1:10000 dilution. Lysates/proteins: 25ug per lane. Blocking buffer: 3% nonfat dry milk in TBST. Detection: ECL Basic Kit. Exposure time: 60s.

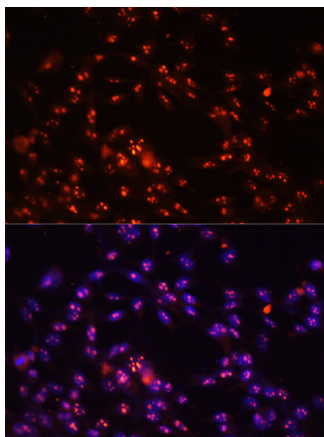


Immunohistochemistry - DKC1 Polyclonal Antibody

Immunohistochemistry of paraffin-embedded human lung cancer using DKC1 antibody at dilution of 1:100 (40x lens).

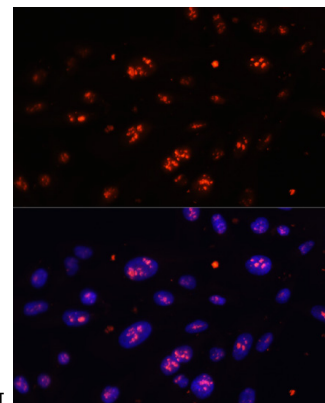
DKC1 Polyclonal Antibody

Catalog Number: 161351



Immunofluorescence - DKC1 Polyclonal Antibody

Immunofluorescence analysis of NIH-3T3 cells using DKC1 antibody at dilution of 1:100. Blue:



DAPI for nuclear staining.

Immunofluorescence - DKC1 Polyclonal Antibody

Immunofluorescence analysis of U-2 OS cells using DKC1 antibody at dilution of 1:100. Blue: DAPI for nuclear staining.