

tubulin-gamma antibody



Catalog Number: 107651

Product name

tubulin-gamma antibody

Specificity

Human; other species not tested.

Antibody description

tubulin-gamma Mouse Monoclonal antibody. Positive IF detected in MDCK cells. Positive WB detected in HepG2 cells, EC109 cells, K-562 cells. Observed molecular weight by Western-blot: 48-55 kDa

Preparation

This antibody was obtained by immunization of tubulin-gamma recombinant protein (Accession Number: NM_001070). Purification method: Protein A purified.

Formulation

PBS with 0.02% sodium azide and 50% glycerol pH 7.3.

Storage

Store at -20°C. DO NOT ALIQUOT

Clonality

Monoclonal

Ig Type

Mouse IgG2a

Applications

ELISA, WB, IF

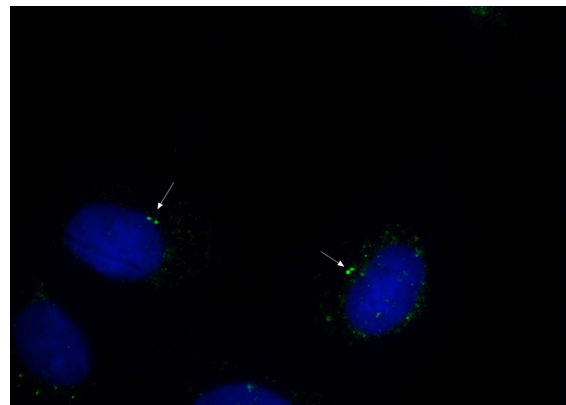
Dilutions

Recommended Dilution:

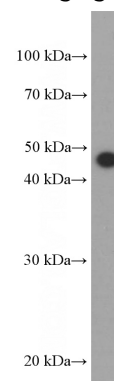
WB: 1:500-1:5000

IF: 1:20-1:200

Validations



Immunofluorescent analysis of (-20oc Ethanol) fixed MDCK cells using Catalog No:107651(tubulin-gamma Antibody) at dilution of 1:150 and Alexa Fluor 488-conjugated AffiniPure



Goat Anti-Mouse IgG(H+L)

HepG2 cells were subjected to SDS PAGE followed by western blot with Catalog No:107651(tubulin-gamma Antibody) at dilution of 1:1000