

CENPC antibody



Catalog Number: 109251

Product name

CENPC antibody

Immunogen

[Human CENPC1 Recombinant protein \(GST tag\)](#)

Specificity

Human, Mouse; other species not tested.

Antibody description

CENPC Rabbit Polyclonal antibody. Positive IF detected in HeLa cells. Positive WB detected in HeLa cells, A431 cells, Jurkat cells. Observed molecular weight by Western-blot: 140 kDa

Preparation

This antibody was obtained by immunization of CENPC recombinant protein (Accession Number: NM_001812). Purification method: Antigen affinity purified.

Formulation

PBS with 0.02% sodium azide and 50% glycerol pH 7.3.

Storage

Store at -20°C. DO NOT ALIQUOT

Clonality

Polyclonal

Ig Type

Rabbit IgG

Applications

ELISA, WB, IF

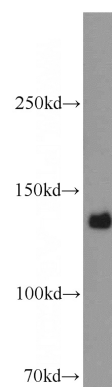
Dilutions

Recommended Dilution:

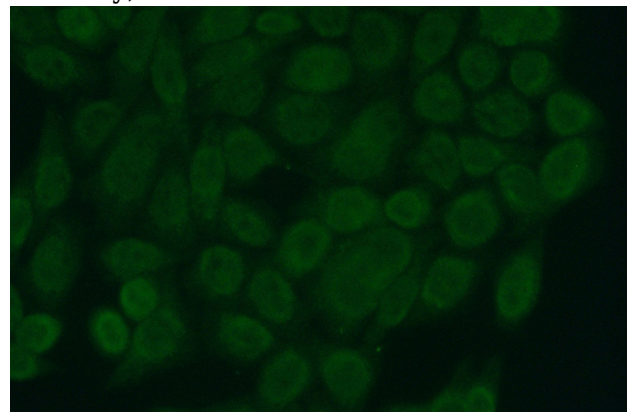
WB: 1:200-1:2000

IF: 1:50-1:500

Validations



HeLa cells were subjected to SDS PAGE followed by western blot with Catalog No:109251(CENPC1 antibody) at dilution of 1:800



Immunofluorescent analysis of (10% Formaldehyde) fixed HeLa cells using Catalog No:109251(CENPC1 Antibody) at dilution of 1:50 and Alexa Fluor 488-conjugated AffiniPure Goat Anti-Rabbit IgG(H+L)