

Anti-KDM1/LSD1 (1E5) Mouse antibody



Catalog Number: 168251

Product name

Anti-KDM1/LSD1 (1E5) Mouse antibody

Specificity

Human, Monkey

Antibody description

KDM1/LSD1 (1E5) Mouse monoclonal antibody

Preparation

Antigen: Purified recombinant human KDM1/LSD1 protein fragments expressed in E.coli.

Formulation

Purified mouse monoclonal in PBS(pH 7.4) containing with 0.02% sodium azide and 50% glycerol.

Storage

Store at 4°C short term. Store at -20°C long term. Avoid freeze / thaw cycle.

Clonality

Monoclonal

Ig Type

Mouse IgG1

Applications

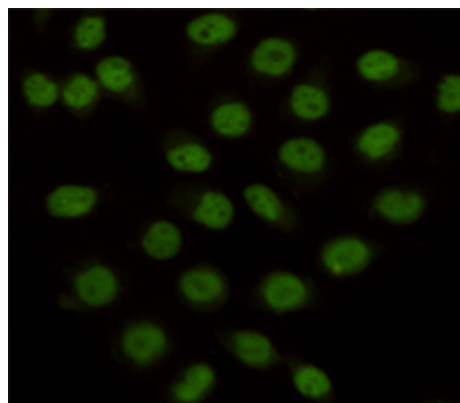
WB, ICC/IF, IP

Dilutions

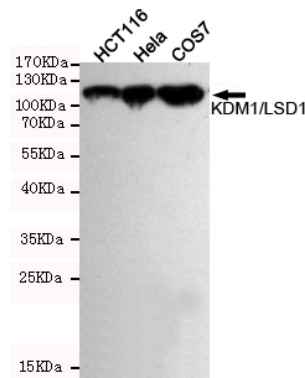
WB: 1/1000

;ICC: 1/100

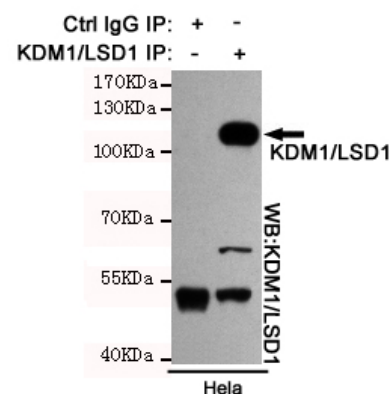
Validations



Immunocytochemistry staining of HeLa cells fixed with 4% Paraformaldehyde and using anti-KDM1/LSD1 mouse mAb (dilution 1:100).



Western blot detection of KDM1/LSD1 in HeLa, HCT116 and COS7 cell lysates using KDM1/LSD1 mouse mAb (1:1000 diluted). Predicted band size: 110KDa. Observed



band size: 110KDa.

Immunoprecipitation analysis of HeLa cell lysates using KDM1/LSD1 mouse mAb.