

ZNF839 antibody



Catalog Number: 117251

Product name

ZNF839 antibody

IHC: 1:20-1:200

IF: 1:10-1:100

Specificity

Human; other species not tested.

Antibody description

ZNF839 Rabbit Polyclonal antibody. Positive IF detected in HepG2 cells, Hela cells. Positive IHC detected in human renal cell carcinoma tissue. Positive WB detected in HeLa cells, human small intestine tissue. Observed molecular weight by Western-blot: 87kd

Preparation

This antibody was obtained by immunization of ZNF839 recombinant protein (Accession Number: BC006222). Purification method: Antigen affinity purified.

Formulation

PBS with 0.02% sodium azide and 50% glycerol pH 7.3.

Storage

Store at -20°C. DO NOT ALIQUOT

Clonality

Polyclonal

Ig Type

Rabbit IgG

Applications

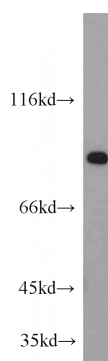
ELISA, WB, IF, IHC

Dilutions

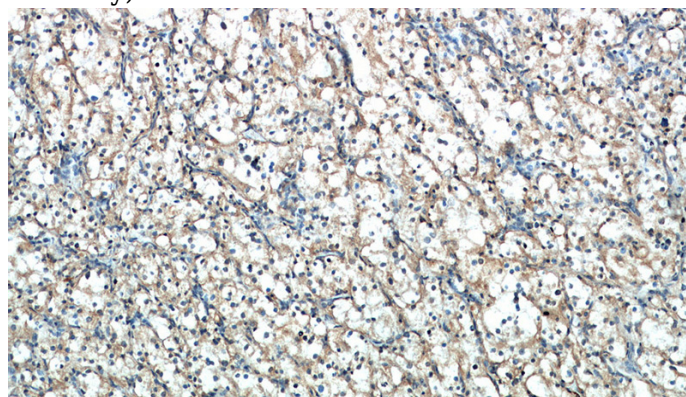
Recommended Dilution:

WB: 1:500-1:5000

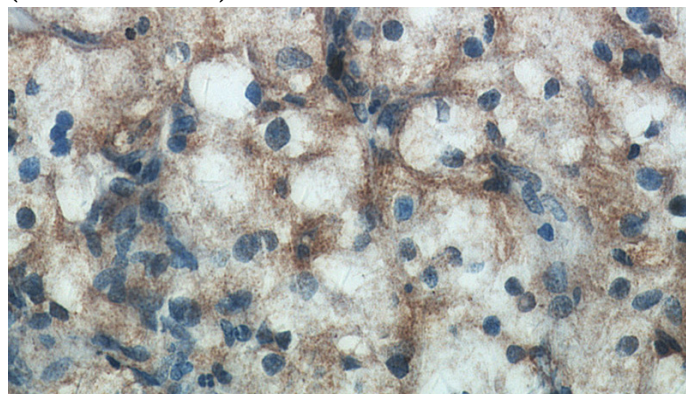
Validations



HeLa cells were subjected to SDS PAGE followed by western blot with Catalog No:117251(ZNF839 antibody) at dilution of 1:500



Immunohistochemical of paraffin-embedded human renal cell carcinoma using Catalog No:117251(ZNF839 antibody) at dilution of 1:50 (under 10x lens)

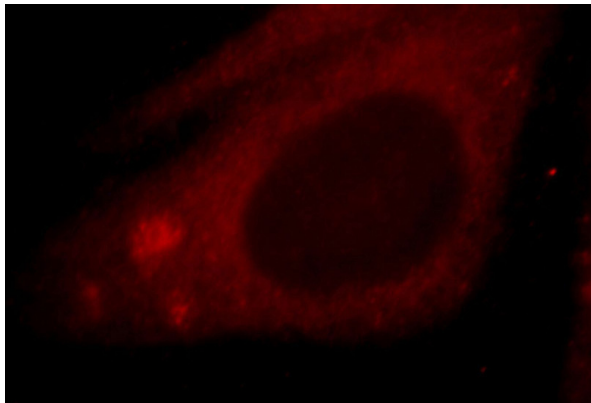


Immunohistochemical of paraffin-embedded

ZNF839 antibody

Catalog Number: 117251

human renal cell carcinoma using Catalog No:117251(ZNF839 antibody) at dilution of 1:50 (under 40x lens)



Immunofluorescent analysis of HepG2 cells, using ZNF839 antibody Catalog No:117251 at 1:25 dilution and Rhodamine-labeled goat anti-rabbit IgG (red).