

# Anti-MIR1-1HG antibody



Catalog Number: 175251

## Product name

Anti-MIR1-1HG antibody

## Specificity

Human

## Antibody description

Rabbit polyclonal antibody to MIR1-1HG

## Preparation

This antigen of this antibody was klh conjugated synthetic peptide derived from human c20orf166 21-120/117

## Formulation

Liquid, 0.01M TBS(pH7.4) with 1% BSA, 0.03% Proclin300 and 50% Glycerol.

## Storage

Store at -20°C for one year. Avoid repeated freeze/thaw cycles. The lyophilized antibody is stable at room temperature for at least one month and for greater than a year when kept at -20°C. When reconstituted in sterile pH 7.4 0.01M PBS or diluent of antibody the antibody is stable for at least two weeks at 2-4°C.

## Clonality

Polyclonal

## Ig Type

Rabbit IgG

## Applications

WB

## Dilutions

WB:1:500-2000

## Validations

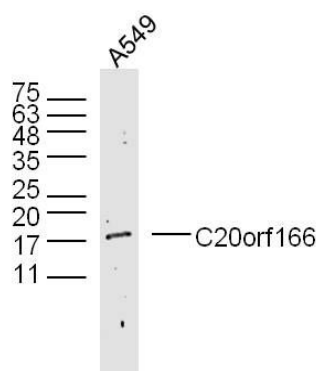


Fig1: Lane 1: (human/cell line)A549lysates probed with C20orf166 Polyclonal Antibody, Unconjugated (Catalog #175251#) at 1:300 overnight at 4°C. Followed by a conjugated secondary antibody (Secondary Catalog #926-32211) at 1:10000 for 60 min at 37°C.