

Anti-Ephrin-A1/EFNA1 antibody



Catalog Number: 102251

Product name

Anti-Ephrin-A1/EFNA1 antibody

Immunogen

[Human Ephrin-A1/EFNA1 \(His Tag\) recombinant protein](#)

Specificity

Human EphrinA1 / EFNA1

Antibody description

Rabbit polyclonal to Ephrin-A1/EFNA1

Preparation

Produced in rabbits immunized with purified, recombinant Human EphrinA1 / EFNA1 (rh EphrinA1; NP_004419.2; Met 1-Ser182). EphrinA1 specific IgG was purified by human EphrinA1 affinity chromatography.

Formulation

0.2 µm filtered solution in PBS with 5% trehalose

Storage

This antibody can be stored at 2°C-8°C for one month without detectable loss of activity. Antibody products are stable for twelve months from date of receipt when stored at -20°C to -80°C.

Preservative-Free.

Sodium azide is recommended to avoid contamination (final concentration 0.05%-0.1%). It is toxic to cells and should be disposed of properly. Avoid repeated freeze-thaw cycles.

Clonality

Polyclonal

Ig Type

Rabbit IgG

Applications

ELISA, IHC-P

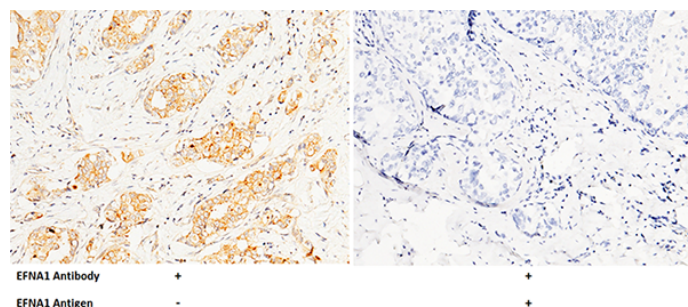
Dilutions

ELISA: 0.5-1.0 µg/mL

This antibody can be used at 0.5-1.0 µg/mL with the appropriate secondary reagents to detect Human EFNA1. The detection limit for Human EFNA1 is 0.00245 ng/well.

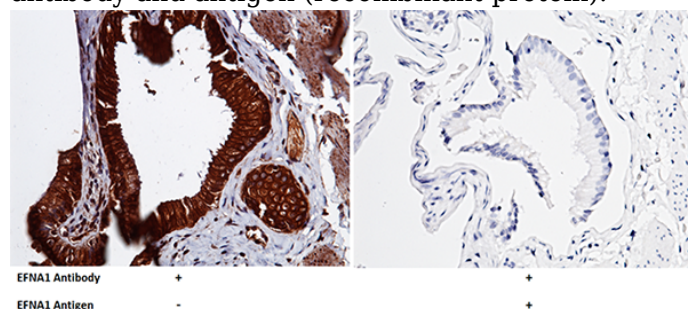
IHC-P: 0.1-2 µg/mL

Validations



Ephrin-A1 / EFNA1 Antibody, Rabbit PAb, Antigen Affinity Purified, Immunohistochemistry

Immunochemical staining of human EFNA1 in human breast carcinoma with rabbit polyclonal antibody (1 µg/mL, formalin-fixed paraffin embedded sections). Positive staining was localized to epithelium. The left panel: tissue incubated with primary antibody; The right panel: tissue incubated with the mixture of primary antibody and antigen (recombinant protein).



Ephrin-A1 / EFNA1 Antibody, Rabbit PAb, Antigen Affinity Purified, Immunohistochemistry

Anti-Ephrin-A1/EFNA1 antibody



Catalog Number: 102251

Immunochemical staining of human EFNA1 in human gallbladder with rabbit polyclonal antibody (1 $\mu\text{g}/\text{mL}$, formalin-fixed paraffin embedded sections). Positive staining was localized to

epithelium. The left panel: tissue incubated with primary antibody; The right panel: tissue incubated with the mixture of primary antibody and antigen (recombinant protein).