

Anti-E Cadherin Rabbit antibody



Catalog Number: 168951

Product name

Anti-E Cadherin Rabbit antibody

Specificity

Human

Antibody description

E Cadherin Rabbit monoclonal antibody

Preparation

Antigen: A synthetic peptide of human E Cadherin

Formulation

50nM Tris-Glycine(pH 7.4), 0.15M NaCl, 40%Glycerol, 0.01% sodium azide and 0.05% BSA.

Storage

Store at 4°C short term. Store at -20°C long term. Avoid freeze / thaw cycle.

Clonality

Monoclonal

Ig Type

Rabbit IgG

Applications

WB, IHC-P, ICC/IF, FC, IP

Dilutions

WB: 1/5000

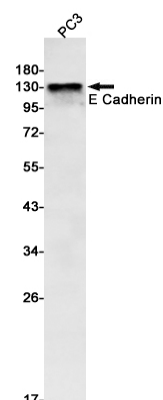
IHC: 1/250

ICC/IF: 1/250

FC: 1/100

IP: 1/50

Validations



Western blot detection of E Cadherin in PC3 cell lysates using E Cadherin Rabbit mAb(1:1000 diluted).Predicted band size:98kDa.Observed band size:80-120(cleavages),135kDa.