

ITLN1 antibody

Catalog Number: 111951

Product name

ITLN1 antibody

WB: 1:500-1:5000

IP: 1:200-1:2000

Specificity

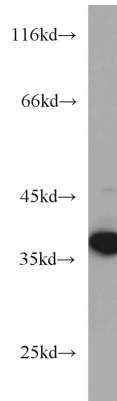
Human, Mouse, Rat; other species not tested.

IHC: 1:20-1:200

Antibody description

ITLN1 Rabbit Polyclonal antibody. Positive IP detected in mouse appendix tissue. Positive WB detected in mouse colon tissue, human heart tissue, human ileum tissue, mouse thymus tissue. Positive IHC detected in human small intestine tissue, human heart tissue. Observed molecular weight by Western-blot: 35-40kd

Validations



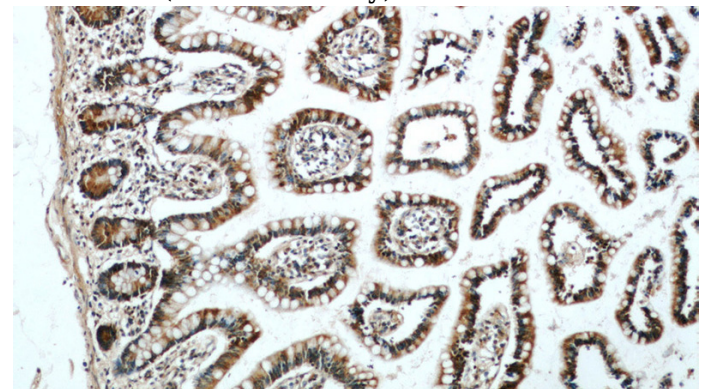
Preparation

This antibody was obtained by immunization of ITLN1 recombinant protein (Accession Number: NM_017625). Purification method: Antigen affinity purified.

mouse colon tissue were subjected to SDS PAGE followed by western blot with Catalog No:111951(ITLN1 antibody) at dilution of 1:300

Formulation

PBS with 0.1% sodium azide and 50% glycerol pH 7.3.



Storage

Store at -20°C. DO NOT ALIQUOT

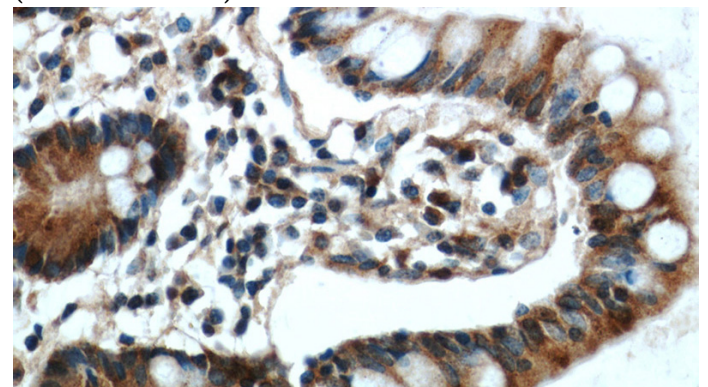
Clonality

Polyclonal

Immunohistochemical of paraffin-embedded human small intestine using Catalog No:111951(ITLN1 antibody) at dilution of 1:50 (under 10x lens)

Ig Type

Rabbit IgG



Applications

ELISA, WB, IHC, IP

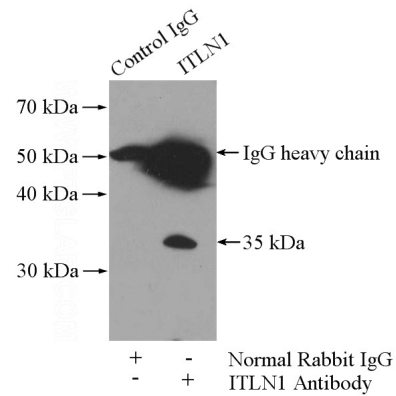
Dilutions

Recommended Dilution:

ITLN1 antibody

Catalog Number: 111951

Immunohistochemical of paraffin-embedded human small intestine using Catalog No:111951(ITLN1 antibody) at dilution of 1:50 (under 40x lens)



IP Result of anti-ITLN1 (IP:Catalog No:111951, 4ug; Detection:Catalog No:111951 1:500) with mouse appendix tissue lysate 4000ug.