

# Anti-A2M antibody



Catalog Number: 176551

## Product name

Anti-A2M antibody

## Specificity

Human

## Antibody description

Rabbit monoclonal antibody to A2M

## Preparation

This antigen of this antibody was recombinant protein

## Formulation

Liquid, 1\*TBS (pH7.4), 0.05% BSA, 40% Glycerol.  
Preservative: 0.05% Sodium Azide.

## Storage

Store at +4°C after thawing. Aliquot store at -20°C or -80°C. Avoid repeated freeze / thaw cycles.

## Clonality

Monoclonal

## Ig Type

Rabbit IgG

## Applications

WB, IHC-P

## Dilutions

WB: 1:1,000-1:2,000

IHC-P: 1:50-1:200

## Validations

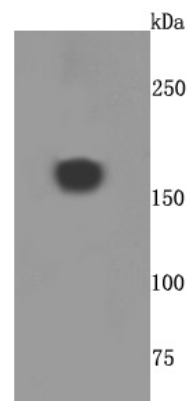


Fig1: Western blot analysis of A2M on human placenta cells lysates using anti-A2M antibody at 1/500 dilution.

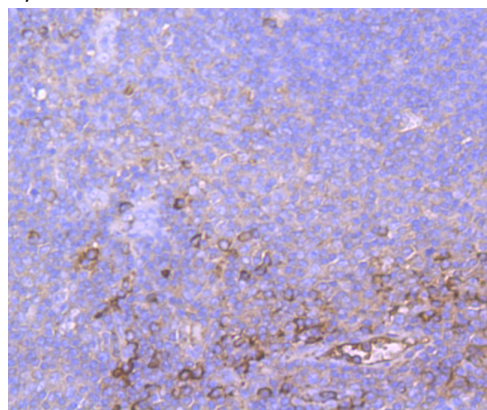


Fig2: Immunohistochemical analysis of paraffin-embedded human tonsil tissue using anti-A2M antibody. Counter stained with hematoxylin.

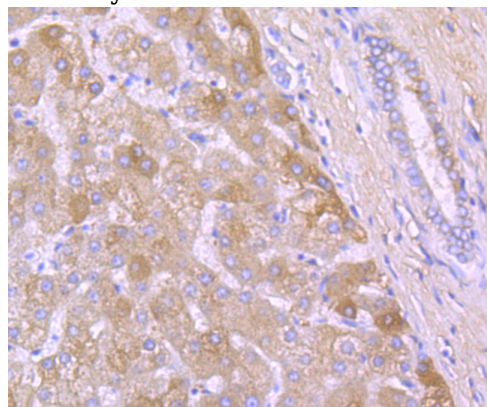


Fig3: Immunohistochemical analysis of paraffin-embedded human liver tissue using anti-A2M antibody. Counter stained with hematoxylin.

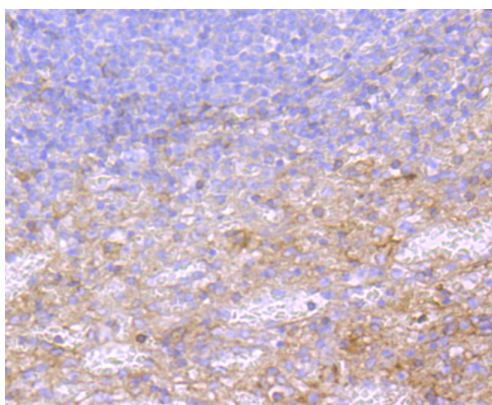


Fig4: Immunohistochemical analysis of paraffin-embedded human spleen tissue using anti- A2M antibody. Counter stained with hematoxylin.