

# P4HA2 antibody

Catalog Number: 113551

## Product name

P4HA2 antibody

IP: 1:500-1:5000

IHC: 1:20-1:200

## Specificity

Human, Mouse, Rat; other species not tested.

## Antibody description

P4HA2 Rabbit Polyclonal antibody. Positive IP detected in HeLa cells. Positive WB detected in HeLa cells, human placenta tissue. Positive IHC detected in human pancreas cancer tissue, human cervical cancer tissue. Observed molecular weight by Western-blot: 61 kDa

## Preparation

This antibody was obtained by immunization of P4HA2 recombinant protein (Accession Number: NM\_001365678). Purification method: Antigen affinity purified.

## Formulation

PBS with 0.02% sodium azide and 50% glycerol pH 7.3.

## Storage

Store at -20°C. DO NOT ALIQUOT

## Clonality

Polyclonal

## Ig Type

Rabbit IgG

## Applications

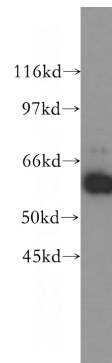
ELISA, WB, IHC, IP

## Dilutions

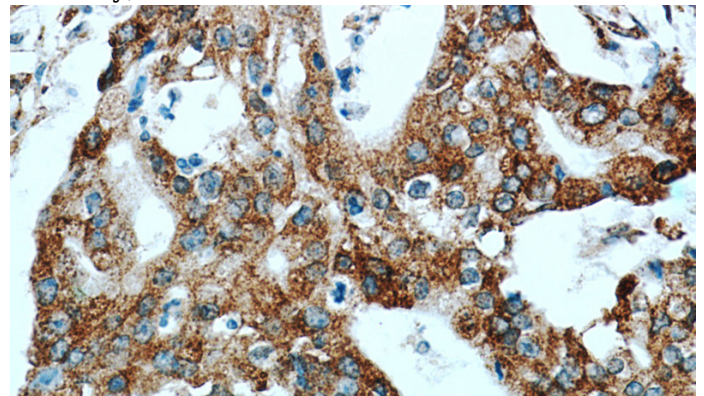
Recommended Dilution:

WB: 1:500-1:5000

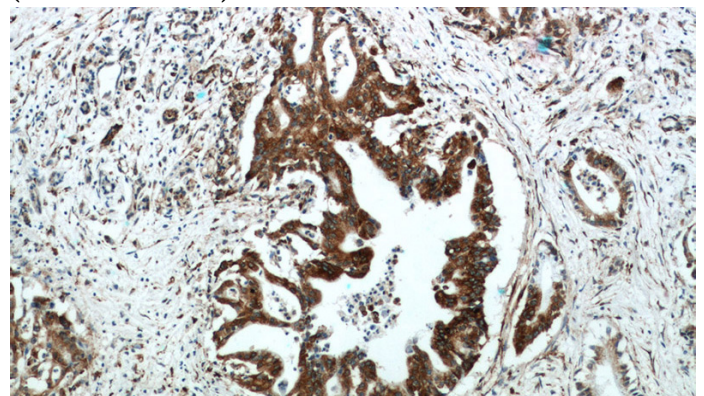
## Validations



HeLa cells were subjected to SDS PAGE followed by western blot with Catalog No:113551(P4HA2 antibody) at dilution of 1:500



Immunohistochemical of paraffin-embedded human pancreas cancer using Catalog No:113551(P4HA2 antibody) at dilution of 1:50 (under 40x lens)



Immunohistochemical of paraffin-embedded

# P4HA2 antibody

Catalog Number: 113551

human pancreas cancer using Catalog No:113551(P4HA2 antibody) at dilution of 1:50 (under 10x lens)

IP Result of anti-P4HA2 (IP:Catalog No:113551, 4ug; Detection:Catalog No:113551 1:1000) with HeLa cells lysate 1200ug.

