

# Anti-GSK3 beta Rabbit antibody



Catalog Number: 167151

## Product name

Anti-GSK3 beta Rabbit antibody

## Specificity

Human, Mouse, Rat

## Antibody description

GSK3 beta Rabbit polyclonal antibody

## Preparation

Antigen: The antiserum was produced against synthesized peptide derived from human GSK3B. AA range:1-50

## Formulation

Liquid in PBS containing 50% glycerol, 0.5% BSA and 0.02% sodium azide.

## Storage

Store at 4°C short term. Store at -20°C long term. Avoid freeze / thaw cycle.

## Clonality

Polyclonal

## Ig Type

Rabbit IgG

## Applications

ICC/IF, WB, IHC-P, IP, ELISA

## Dilutions

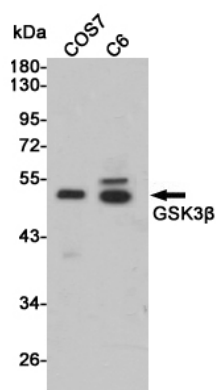
IF: 1/50-200

WB: 1/500 - 1/2000

IHC: 1/100 - 1/300

ELISA: 1/20000

## Validations



Western blot detection of GSK3u03b2 in COS7 and C6 cell lysates using GSK3u03b2 rabbit pAb (1:2000 diluted). Predicted band size:46kDa. Observed band size:46kDa.