

COPB2 Polyclonal Antibody



Catalog Number: 165151

Product name

COPB2 Polyclonal Antibody

Specificity

Human, Mouse, Rat

Antibody description

Polyclonal antibody to COPB2

Preparation

Antigen: Recombinant fusion protein containing a sequence corresponding to amino acids 657-906 of human COPB2 (NP_004757.1).

Formulation

PBS with 0.02% sodium azide, 50% glycerol, pH7.3.

Storage

Store at -20°C. Avoid freeze / thaw cycles.

Clonality

Polyclonal

Ig Type

Rabbit IgG

Applications

WB, IHC, IF

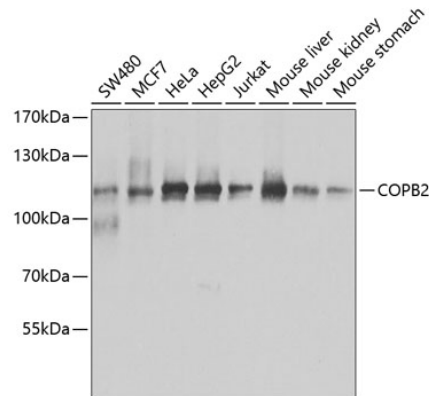
Dilutions

WB 1:500 - 1:2000

IHC 1:50 - 1:200

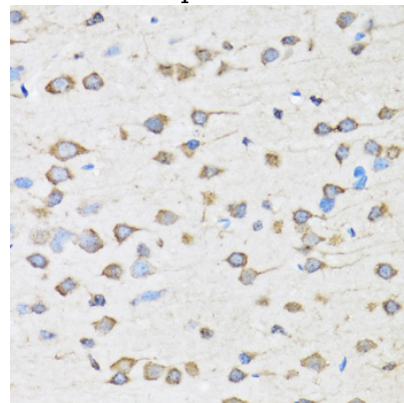
IF 1:50 - 1:100

Validations



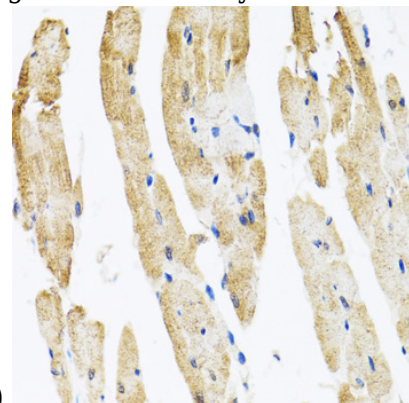
Western blot - COPB2 Polyclonal Antibody

Western blot analysis of extracts of various cell lines, using COPB2 antibody at 1:1000 dilution. Secondary antibody: HRP Goat Anti-Rabbit IgG (H+L) at 1:10000 dilution. Lysates/proteins: 25ug per lane. Blocking buffer: 3% nonfat dry milk in TBST. Detection: ECL Basic Kit. Exposure time: 5s.



Immunohistochemistry - COPB2 Polyclonal Antibody

Immunohistochemistry of paraffin-embedded rat brain using COPB2 antibody at dilution of 1:100



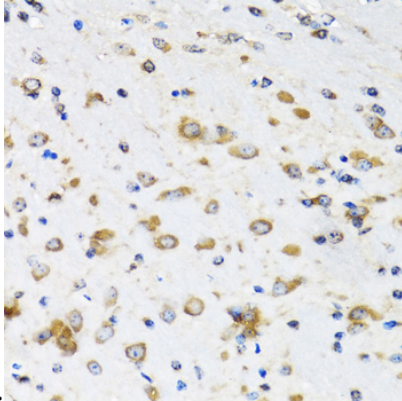
(40x lens).

COPB2 Polyclonal Antibody

Catalog Number: 165151

Immunohistochemistry - COPB2 Polyclonal Antibody

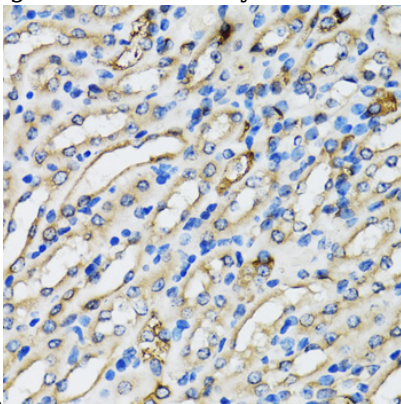
Immunohistochemistry of paraffin-embedded rat heart using COPB2 antibody at dilution of 1:100



(40x lens).

Immunohistochemistry - COPB2 Polyclonal Antibody

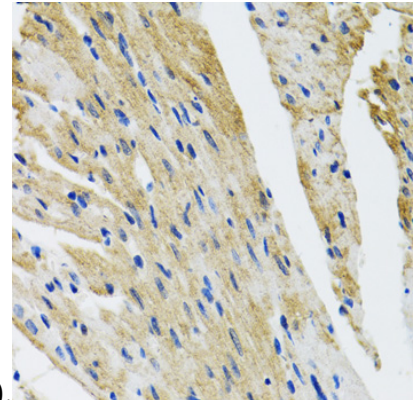
Immunohistochemistry of paraffin-embedded mouse brain using COPB2 antibody at dilution of



1:100 (40x lens).

Immunohistochemistry - COPB2 Polyclonal Antibody

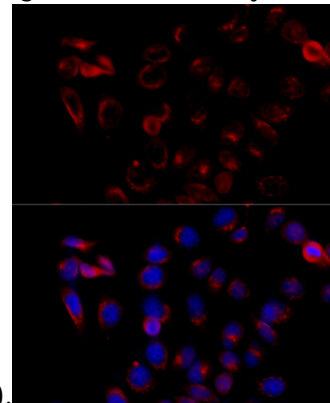
Immunohistochemistry of paraffin-embedded mouse kidney using COPB2 antibody at dilution of



1:100 (40x lens).

Immunohistochemistry - COPB2 Polyclonal Antibody

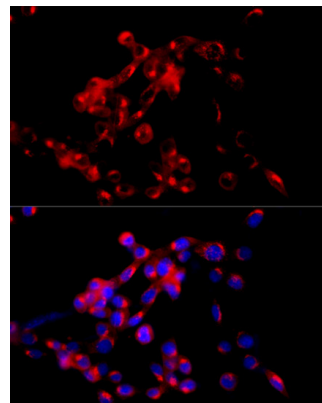
Immunohistochemistry of paraffin-embedded mouse heart using COPB2 antibody at dilution of



1:100 (40x lens).

Immunofluorescence - COPB2 Polyclonal Antibody

Immunofluorescence analysis of HeLa cells using COPB2 antibody at dilution of 1:100 (40x lens).
Blue: DAPI for nuclear staining.



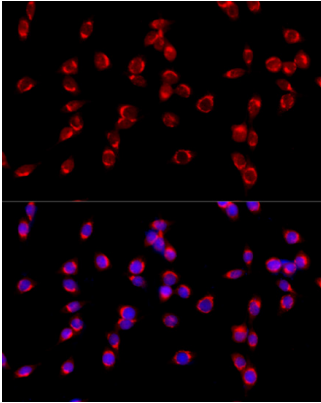
Immunofluorescence - COPB2 Polyclonal Antibody

Immunofluorescence analysis of NIH/3T3 cells

COPB2 Polyclonal Antibody

Catalog Number: 165151

using COPB2 antibody at dilution of 1:100 (40x lens). Blue: DAPI for nuclear staining.



Immunofluorescence - COPB2 Polyclonal Antibody

Immunofluorescence analysis of PC-12 cells using COPB2 antibody at dilution of 1:100 (40x lens).

Blue: DAPI for nuclear staining.