

Human APEX1/AP/APEX/Ref-1 (His Tag) recombinant protein



Catalog Number: 502151

General Information

Gene Name Synonym

APEX nuclease; Apurinic-apyrimidinic endonuclease 1; REF-1; Redox factor-1; DNA-(apurinic or apyrimidinic site) lyase, mitochondrial

Protein Construction

A DNA sequence encoding the human APEX1 (P27695) (Pro2-Leu 318) was expressed, with a polyhistidine tag at the N-terminus.

Organism

Human

Expression Host

E. coli

QC Testing

Purity

> 92 % as determined by SDS-PAGE

Endotoxin

< 1.0 EU per μg of the protein as determined by the LAL method

Stability

Samples are stable for up to twelve months from date of receipt at -70°C

Predicted N terminal

Met

Molecular Mass

The recombinant human APEX1 consisting of 328 amino acids and migrates as an approximately 37 kDa band in SDS-PAGE under reducing conditions as predicted.

Formulation

- Lyophilized from sterile PBS, pH 7.5
1. 5 % trehalose and mannitol are added as protectants before lyophilization.
 2. Please contact us for any concerns or special requirements.

Usage Guide

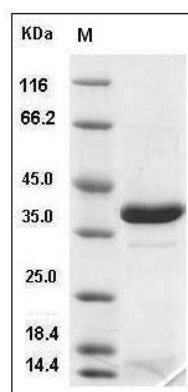
Storage

Store it under sterile conditions at -20°C to -80°C . It is recommended that the protein be aliquoted for optimal storage. Avoid repeated freeze-thaw cycles.

Reconstitution

Adding sterile water, prepare a stock solution of 0.25 mg/ml. Concentration is measured by UV-Vis.

SDS-PAGE



Human APEX1 / AP / APEX / Ref-1 Protein (His Tag) SDS-PAGE