

# Human CPVL/VLP/PSEC0124/UNQ197/PRO223 (His tag) recombinant protein



Catalog Number: 518851

## General Information

### Gene Name Synonym

Probable serine carboxypeptidase CPVL, Carboxypeptidase vitellogenic-like, Vitellogenic carboxypeptidase-like protein, VCP-like protein, CPVL

### Protein Construction

A DNA sequence encoding the Human CPVL/VLP/PSEC0124/UNQ197/PRO223 Leu23-Gly476 is expressed with a 6His tag at the C-terminus.

### Organism

Human

### Expression Host

Human Cells

## QC Testing

### Purity

>95% as determined by SDS-PAGE.

### Endotoxin

<1.0 EU per  $\mu\text{g}$  protein as determined by the LAL method.

### Stability

Store for up to 6 months at  $-20^{\circ}\text{C}$

### Formulation

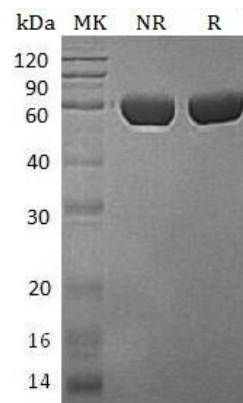
Supplied as a  $0.2\ \mu\text{m}$  filtered solution of 20mM TrisHCl, 150mM NaCl, 10% Glycerol, pH7.5.

## Usage Guide

### Storage

Store at  $<-20^{\circ}\text{C}$ , minimize freeze-thaw cycles.

### SDS-PAGE



Human CPVL/VLP/PSEC0124/UNQ197/PRO223 (His tag) recombinant protein