

Anti-Phospho-Src (Tyr419) Rabbit antibody



Catalog Number: 168851

Product name

Anti-Phospho-Src (Tyr419) Rabbit antibody

Ig Type

Rabbit IgG

Specificity

Human, Mouse, Rat

Applications

WB, FC

Antibody description

Phospho-Src (Tyr419) Rabbit monoclonal antibody

Dilutions

1:1000

Preparation

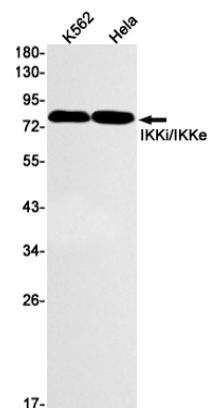
Antigen: A synthetic phosphopeptide corresponding to residues surrounding Tyr419 of human Src

1:20

Validations

Formulation

Supplied in 50nM Tris-Glycine(pH 7.4), 0.15M NaCl, 40%Glycerol, 0.01% sodium azide and 0.05% BSA.



Western blot detection of Phospho-Src (Tyr419) in K562, HeLa cell lysates using Phospho-Src (Tyr419) Rabbit mAb(1:1000 diluted). Predicted band size: 60kDa. Observed band size: 60kDa.

Storage

Store at 4°C short term. Aliquot and store at -20°C long term. Avoid freeze / thaw cycle.

Clonality

Monoclonal