

# RSPO2 antibody

Catalog Number: 114851

## Product name

RSPO2 antibody

IP: 1:200-1:2000

IHC: 1:50-1:500

## Specificity

Human, Mouse, Rat; other species not tested.

## Antibody description

RSPO2 Rabbit Polyclonal antibody. Positive WB detected in mouse brain tissue. Positive IP detected in mouse brain tissue. Positive IHC detected in mouse small intestine tissue. Observed molecular weight by Western-blot: 33 kDa

## Preparation

This antibody was obtained by immunization of RSPO2 recombinant protein (Accession Number: NM\_001317942). Purification method: Antigen affinity purified.

## Formulation

PBS with 0.02% sodium azide and 50% glycerol pH 7.3.

## Storage

Store at -20°C. DO NOT ALIQUOT

## Clonality

Polyclonal

## Ig Type

Rabbit IgG

## Applications

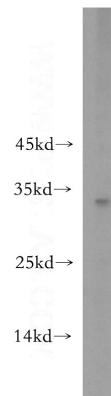
ELISA, WB, IP, IHC

## Dilutions

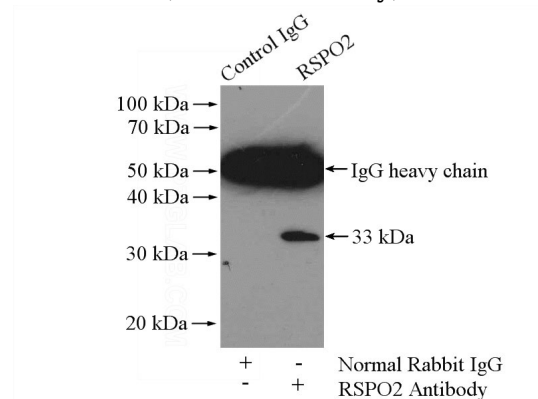
Recommended Dilution:

WB: 1:1000-1:10000

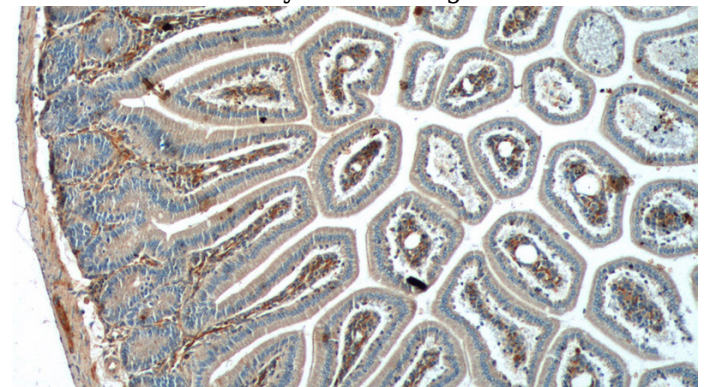
## Validations



mouse brain tissue were subjected to SDS PAGE followed by western blot with Catalog No:114851(RSPO2 antibody) at dilution of 1:3000



IP Result of anti-RSPO2 (IP:Catalog No:114851, 4ug; Detection:Catalog No:114851 1:500) with mouse brain tissue lysate 2640ug.



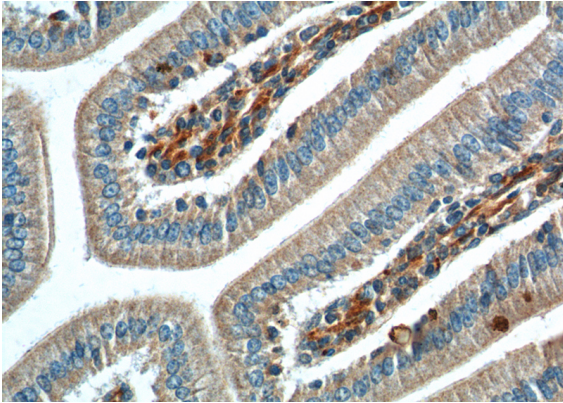
Immunohistochemistry of paraffin-embedded mouse small intestine tissue slide using Catalog

# RSPO2 antibody

Catalog Number: 114851

---

No:114851(RSPO2 Antibody) at dilution of 1:200  
(under 10x lens).



Immunohistochemistry of paraffin-embedded  
mouse small intestine tissue slide using Catalog  
No:114851(RSPO2 Antibody) at dilution of 1:200  
(under 40x lens).