

PKC gamma antibody



Catalog Number: 113851

Product name

PKC gamma antibody

WB: 1:500-1:5000

IP: 1:200-1:2000

Specificity

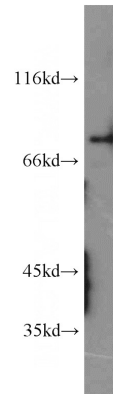
Human, Mouse, Rat; other species not tested.

IHC: 1:20-1:200

Antibody description

PKC gamma Rabbit Polyclonal antibody. Positive FC detected in HeLa cells. Positive IHC detected in human cerebellum tissue, human gliomas tissue, rat brain tissue. Positive WB detected in human brain tissue. Positive IP detected in mouse brain tissue. Observed molecular weight by Western-blot: 76-80 kDa

Validations



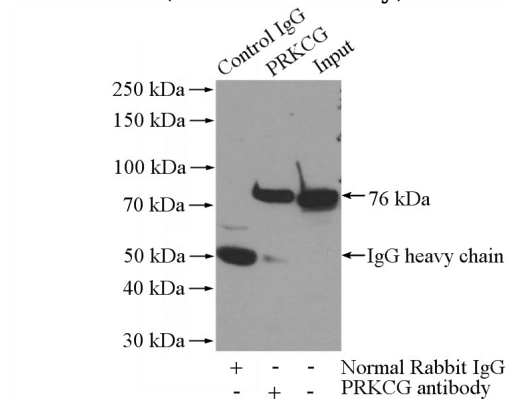
Preparation

This antibody was obtained by immunization of PKC gamma recombinant protein (Accession Number: NM_002739). Purification method: Antigen affinity purified.

human brain tissue were subjected to SDS PAGE followed by western blot with Catalog No:113851 (PRKCG antibody) at dilution of 1:1000

Formulation

PBS with 0.02% sodium azide and 50% glycerol pH 7.3.



Storage

Store at -20°C. DO NOT ALIQUOT

Clonality

Polyclonal

Ig Type

Rabbit IgG

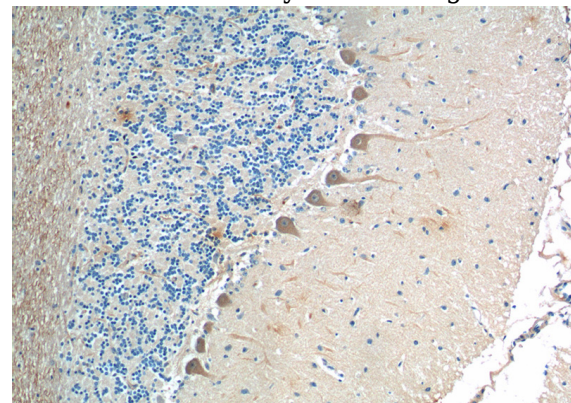
Applications

ELISA, WB, FC, IP, IHC

Dilutions

Recommended Dilution:

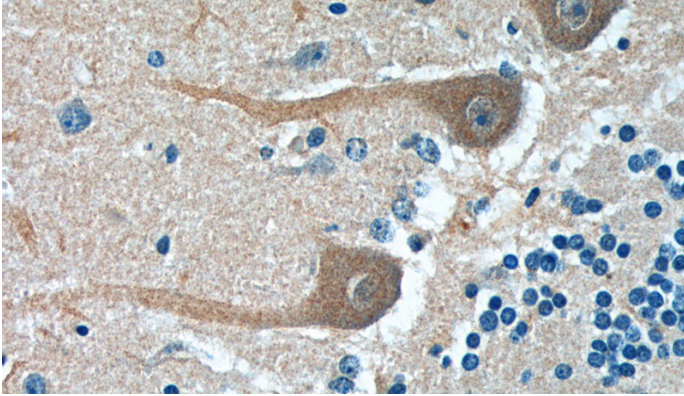
IP Result of anti-PRKCG (IP:Catalog No:113851, 4ug; Detection:Catalog No:113851 1:500) with mouse brain tissue lysate 2640ug.



PKC gamma antibody

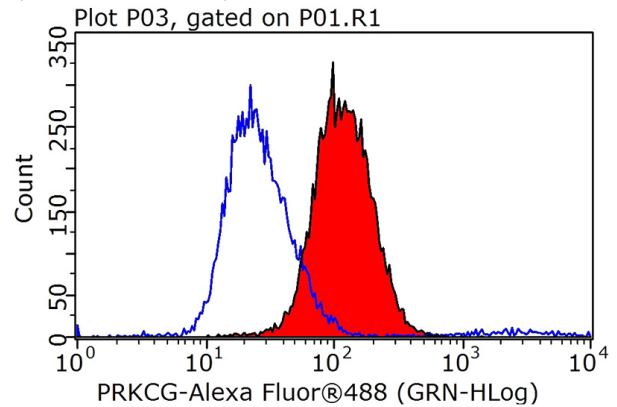
Catalog Number: 113851

Immunohistochemistry of paraffin-embedded human cerebellum tissue slide using Catalog No:113851(PRKCG Antibody) at dilution of 1:200 (under 10x lens).



Immunohistochemistry of paraffin-embedded human cerebellum tissue slide using Catalog No:113851(PRKCG Antibody) at dilution of 1:200

(under 40x lens).



1×10^6 HeLa cells were stained with 1ug PRKCG antibody (Catalog No:113851, red) and control antibody (blue). Fixed with 90% MeOH blocked with 3% BSA (30 min). Alexa Fluor 488-conjugated AffiniPure Goat Anti-Rabbit IgG(H+L) with dilution 1:1000.