

BLMH antibody

Catalog Number: 108451

Product name

BLMH antibody

WB: 1:500-1:5000

IP: 1:500-1:5000

Specificity

Human, Mouse, Rat; other species not tested.

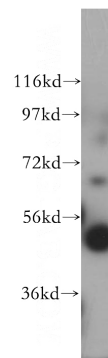
IHC: 1:20-1:200

IF: 1:20-1:200

Antibody description

BLMH Rabbit Polyclonal antibody. Positive WB detected in human colon tissue, mouse pancreas tissue, mouse spleen tissue. Positive IP detected in mouse skin tissue. Positive IF detected in Hela cells. Positive IHC detected in human colon cancer tissue. Observed molecular weight by Western-blot: 50 kDa

Validations



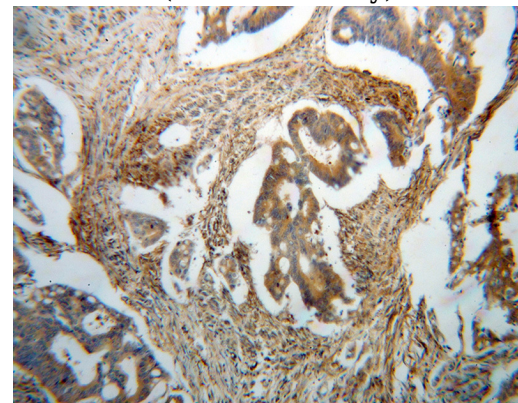
Preparation

This antibody was obtained by immunization of BLMH recombinant protein (Accession Number: NM_000386). Purification method: Antigen affinity purified.

human colon tissue were subjected to SDS PAGE followed by western blot with Catalog No:117186(BLMH antibody) at dilution of 1:600

Formulation

PBS with 0.02% sodium azide and 50% glycerol pH 7.3.



Storage

Store at -20°C. DO NOT ALIQUOT

Clonality

Polyclonal

Ig Type

Rabbit IgG

Immunohistochemical of paraffin-embedded human colon cancer using Catalog No:117186(BLMH antibody) at dilution of 1:100 (under 10x lens)

Applications

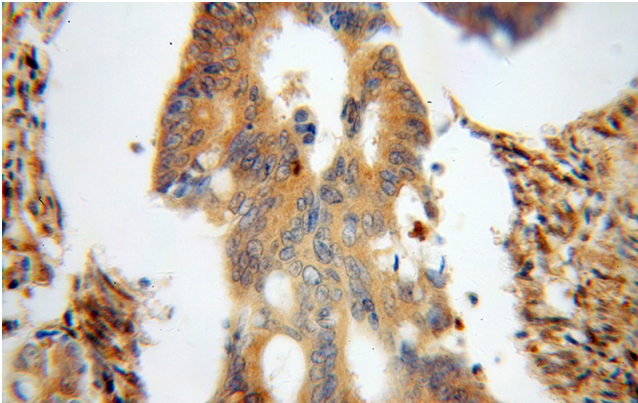
ELISA, WB, IHC, IF, IP

Dilutions

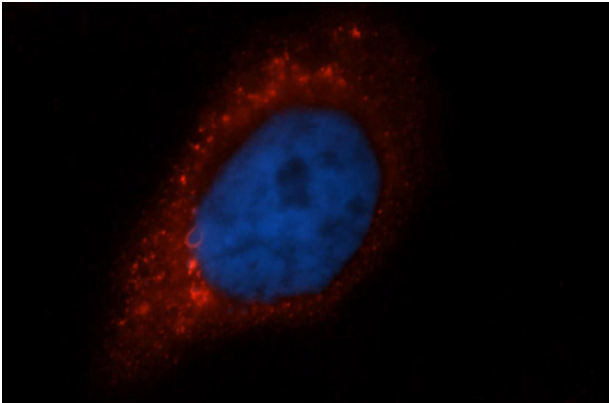
Recommended Dilution:

BLMH antibody

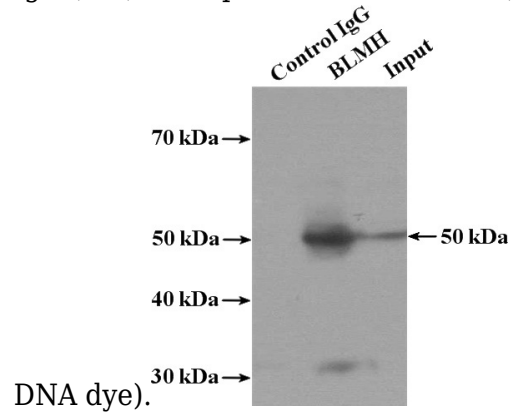
Catalog Number: 108451



Immunohistochemical of paraffin-embedded human colon cancer using Catalog No:117186(BLMH antibody) at dilution of 1:100 (under 40x lens)



Immunofluorescent analysis of HeLa cells, using BLMH antibody Catalog No:117186 at 1:50 dilution and Rhodamine-labeled goat anti-rabbit IgG (red). Blue pseudocolor = DAPI (fluorescent



IP Result of anti-BLMH (IP:Catalog No:117186, 4ug; Detection:Catalog No:117186 1:1000) with mouse skin tissue lysate 3200ug.