

Anti-Phospho-Tau (Ser198) Rabbit antibody



Catalog Number: 167451

Product name

Rabbit IgG

Anti-Phospho-Tau (Ser198) Rabbit antibody

Applications

Specificity

WB, ICC/IF, IP

Human

Dilutions

Antibody description

WB: 1/5000

Phospho-Tau (Ser198) Rabbit polyclonal antibody

ICC/IF: 1/20

Preparation

IP: 1/20

Antigen: A synthetic phosphopeptide corresponding to residues surrounding Ser198 of human Tau

Validations

Formulation

Supplied in 50nM Tris-Glycine(pH 7.4), 0.15M NaCl, 40%Glycerol, 0.01% sodium azide and 0.05% BSA.

Storage

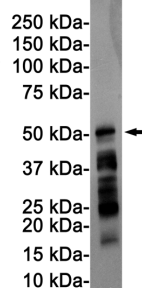
Store at -20°C. Stable for 12 months from date of receipt.

Clonality

Polyclonal

Ig Type

Human Fetal brain



Western blot detection of Tau (Phospho-Ser198) in Human Fetal brain cell lysates using Tau (Phospho-Ser198) Rabbit pAb(1:1000 diluted). Predicted band size: 79KDa. Observed band size: 50-80KDa.