

# HPS1 antibody



Catalog Number: 111451

## Product name

HPS1 antibody

## Specificity

Human; other species not tested.

## Antibody description

HPS1 Rabbit Polyclonal antibody. Positive WB detected in L02 cells, HEK-293 cells, K-562 cells, Raji cells, Transfected HEK-293 cells, Y79 cells. Observed molecular weight by Western-blot: 70-79 kDa

## Preparation

This antibody was obtained by immunization of HPS1 recombinant protein (Accession Number: NM\_182639). Purification method: Antigen affinity purified.

## Formulation

PBS with 0.02% sodium azide and 50% glycerol pH 7.3.

## Storage

Store at -20°C. DO NOT ALIQUOT

## Clonality

Polyclonal

## Ig Type

Rabbit IgG

## Applications

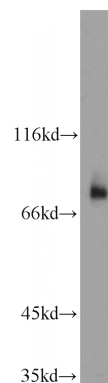
ELISA, WB

## Dilutions

Recommended Dilution:

WB: 1:200-1:2000

## Validations



L02 cells were subjected to SDS PAGE followed by western blot with Catalog No:111451(HPS1 antibody) at dilution of 1:800