

## General Information

### Gene Name Synonym

Peptidase M 1

### Protein Construction

A DNA sequence encoding the human METAP1 (NP\_055958.2) (His52-Phe386) was expressed with a polyhistidine tag at the C-terminus and an initial Met at the N-terminus.

### Organism

Human

### Expression Host

Baculovirus-Insect Cells

## QC Testing

### Purity

> 95 % as determined by SDS-PAGE.

### Endotoxin

< 1.0 EU per  $\mu\text{g}$  protein as determined by the LAL method.

### Stability

Samples are stable for up to twelve months from date of receipt at  $-70^{\circ}\text{C}$

### Predicted N terminal

Met

### Molecular Mass

The recombinant human METAP1 consists 347 amino acids and predicts a molecular mass of 39.3 kDa.

### Formulation

Lyophilized from sterile 20 mM Tris, 500 mM NaCl, pH 8.0, 10 % glycerol.

1. 5 % trehalose and mannitol are added as protectants before lyophilization.

2. Please contact us for any concerns or special requirements.

## Usage Guide

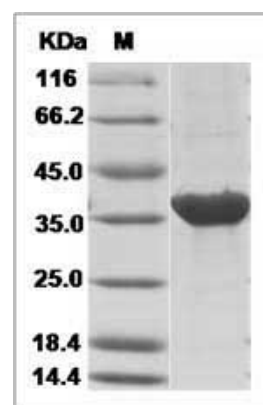
### Storage

Store it under sterile conditions at  $-20^{\circ}\text{C}$  to  $-80^{\circ}\text{C}$ . It is recommended that the protein be aliquoted for optimal storage. Avoid repeated freeze-thaw cycles.

### Reconstitution

Adding sterile water, prepare a stock solution of 0.25 mg/ml. Concentration is measured by UV-Vis.

### SDS-PAGE



Human METAP1 Protein (His Tag)