

General Information

Gene Name Synonym

C-type lectin superfamily member 8; C-type lectin-like receptor 6

Protein Construction

A DNA sequence encoding the human CLEC4D (NP_525126.2) extracellular domain (Gly 52-Asn 215) was expressed, with a polyhistidine tag at the N-terminus.

Organism

Human

Expression Host

Human Cells

QC Testing

Purity

> 92 % as determined by SDS-PAGE

Endotoxin

< 1.0 EU per μg of the protein as determined by the LAL method

Stability

Samples are stable for up to twelve months from date of receipt at -70°C

Predicted N terminal

His

Molecular Mass

The recombinant human CLEC4D consists of 180

amino acids and has a calculated molecular mass of 21.2 kDa. In SDS-PAGE under reducing conditions, rhCLEC4D migrates as several bands with apparent molecular mass of 21-27 kDa due to different glycosylation.

Formulation

Lyophilized from sterile PBS, pH 7.4

1. 5 % trehalose and mannitol are added as protectants before lyophilization.

2. Please contact us for any concerns or special requirements.

Usage Guide

Storage

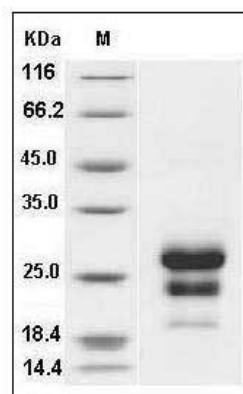
Store it under sterile conditions at -20°C to -80°C .

It is recommended that the protein be aliquoted for optimal storage. Avoid repeated freeze-thaw cycles.

Reconstitution

Adding sterile water, prepare a stock solution of 0.25 mg/ml. Concentration is measured by UV-Vis.

SDS-PAGE



Human CLEC4D / CLECSF8 Protein (His Tag)
SDS-PAGE