

# KIF7 antibody

Catalog Number: 112051

## Product name

KIF7 antibody

## Specificity

Human; other species not tested.

## Antibody description

KIF7 Rabbit Polyclonal antibody. Positive IP detected in HEK-293 cells. Positive WB detected in HEK-293 cells, A375 cells. Observed molecular weight by Western-blot: 150 kDa

## Preparation

This antibody was obtained by immunization of KIF7 recombinant protein (Accession Number: BC112271). Purification method: Antigen affinity purified.

## Formulation

PBS with 0.1% sodium azide and 50% glycerol pH 7.3.

## Storage

Store at -20°C. DO NOT ALIQUOT

## Clonality

Polyclonal

## Ig Type

Rabbit IgG

## Applications

ELISA, IP, WB

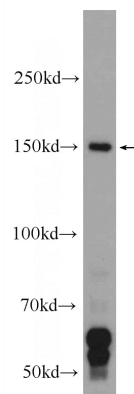
## Dilutions

Recommended Dilution:

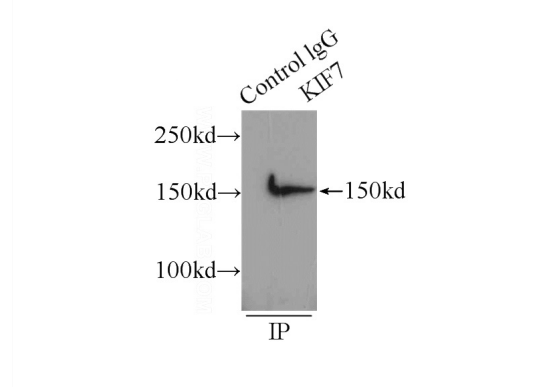
WB: 1:500-1:5000

IP: 1:200-1:2000

## Validations



HEK-293 cells were subjected to SDS PAGE followed by western blot with Catalog No:112051(KIF7 Antibody) at dilution of 1:1000



IP Result of anti-KIF7 (IP:Catalog No:112051, 5ug; Detection:Catalog No:112051 1:500) with HEK-293 cells lysate 1760ug.