

Anti-VWF antibody



Catalog Number: 102051

Product name

Anti-VWF antibody

Immunogen

[Human VWF \(His Tag\) recombinant protein](#)

Specificity

Human vWF / von Willebrand factor

Antibody description

Rabbit monoclonal to VWF

Preparation

This antibody was obtained from a rabbit immunized with purified, recombinant Human von Willebrand factor (rh vWF; Met 1-Lys 2813; NP_000543.2)

Formulation

0.2 µm filtered solution in PBS with 5% trehalose

Storage

This antibody can be stored at 2°C-8°C for one month without detectable loss of activity. Antibody products are stable for twelve months from date of receipt when stored at -20°C to -80°C.

Preservative-Free.

Sodium azide is recommended to avoid contamination (final concentration 0.05%-0.1%). It is toxic to cells and should be disposed of properly. Avoid repeated freeze-thaw cycles.

Clonality

Monoclonal

Ig Type

Rabbit IgG

Applications

ELISA, IHC-P

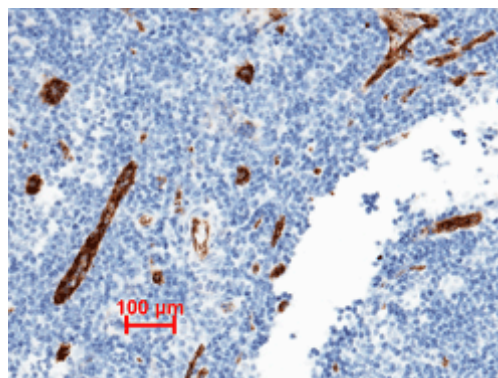
Dilutions

ELISA: 0.1-0.2 µg/mL

This antibody can be used at 0.1-0.2 µg/mL with the appropriate secondary reagents to detect Human vWF. The detection limit for Human vWF is approximately 0.0049 ng/well.

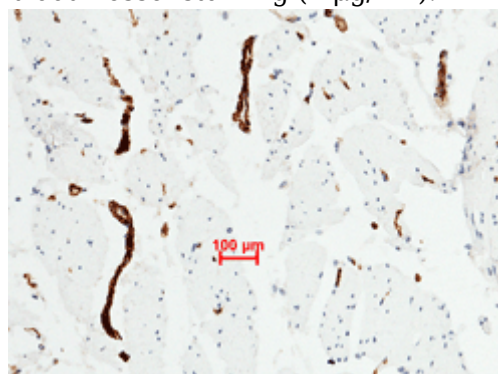
IHC-P: 0.5-5 µg/mL

Validations



vWF Antibody, Rabbit MAb,
Immunohistochemistry

Immunohistochemical staining of formalin fixed, paraffin-embedded human lymphonode showing blood vessel staining (1 µg/mL).

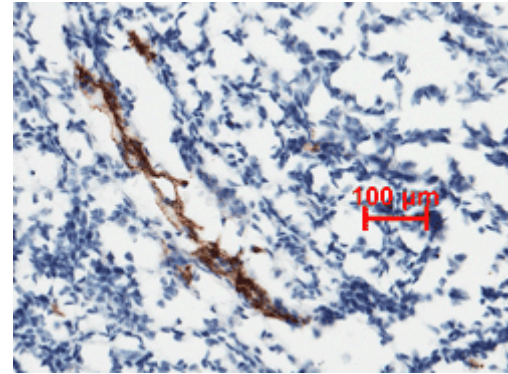
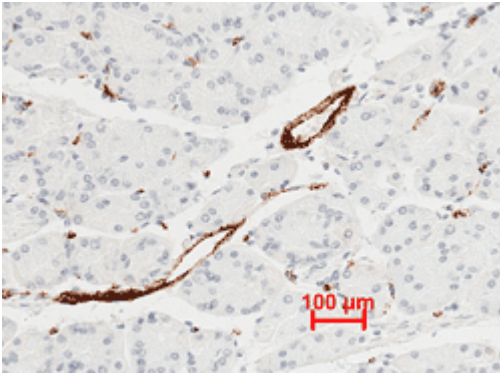


vWF Antibody, Rabbit MAb,
Immunohistochemistry

Immunohistochemical staining of formalin fixed, paraffin-embedded human muscle showing blood vessel staining (1 µg/mL).

Anti-VWF antibody

Catalog Number: 102051



vWF Antibody, Rabbit MAb,
Immunohistochemistry

vWF Antibody, Rabbit MAb,
Immunohistochemistry

Immunohistochemical staining of formalin fixed, paraffin-embedded human stomach showing blood vessel staining (1 $\mu\text{g}/\text{mL}$).

Immunohistochemical staining of formalin fixed, paraffin-embedded human tonsil showing blood vessel staining (1 $\mu\text{g}/\text{mL}$).