

# CUL1 antibody

Catalog Number: 109741

## Product name

CUL1 antibody

IP: 1:200-1:1000

IHC: 1:20-1:200

## Specificity

Human; other species not tested.

## Antibody description

CUL1 Rabbit Polyclonal antibody. Positive IHC detected in human lung cancer tissue. Positive WB detected in BxPC-3 cells, K-562 cells. Positive IP detected in HeLa cells. Observed molecular weight by Western-blot: 90 kDa

## Preparation

This antibody was obtained by immunization of CUL1 recombinant protein (Accession Number: BC034318). Purification method: Antigen affinity purified.

## Formulation

PBS with 0.1% sodium azide and 50% glycerol pH 7.3.

## Storage

Store at -20°C. DO NOT ALIQUOT

## Clonality

Polyclonal

## Ig Type

Rabbit IgG

## Applications

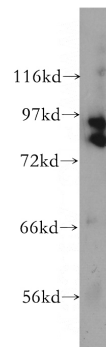
ELISA, WB, IHC, IP

## Dilutions

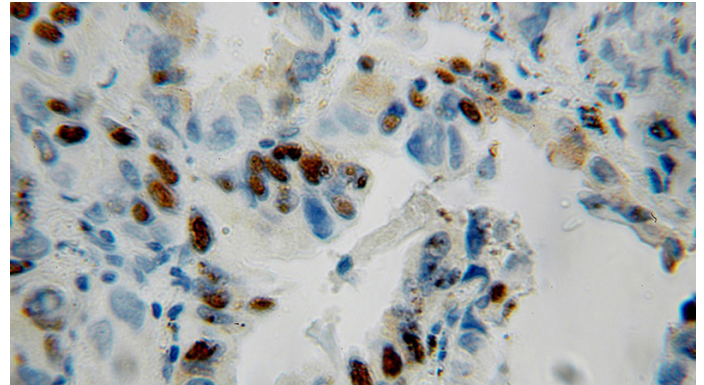
Recommended Dilution:

WB: 1:500-1:5000

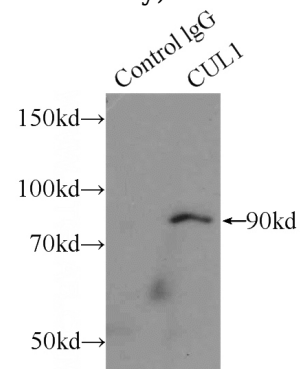
## Validations



BxPC-3 cells were subjected to SDS PAGE followed by western blot with Catalog No:109741(CUL1 antibody) at dilution of 1:400



Immunohistochemical of paraffin-embedded human lung cancer using Catalog No:109741(CUL1 antibody) at dilution of 1:50



(under 10x lens)

IP Result of anti-CUL1 (IP:Catalog No:109741, 3ug; Detection:Catalog No:109741 1:300) with

# CUL1 antibody



Catalog Number: 109741

---

HeLa cells lysate 2000ug.