

# Anti-Bag1 Rabbit antibody



Catalog Number: 168741

## Product name

Anti-Bag1 Rabbit antibody

## Specificity

Human, Mouse, Rat

## Antibody description

Bag1 Rabbit monoclonal antibody

## Preparation

Antigen: A synthetic peptide of human Bag1

## Formulation

50nM Tris-Glycine(pH 7.4), 0.15M NaCl, 40%Glycerol, 0.01% sodium azide and 0.05% BSA.

## Storage

Store at 4°C short term. Store at -20°C long term. Avoid freeze / thaw cycle.

## Clonality

Monoclonal

## Ig Type

Rabbit IgG

## Applications

WB, IHC-P, ICC/IF, IP

## Dilutions

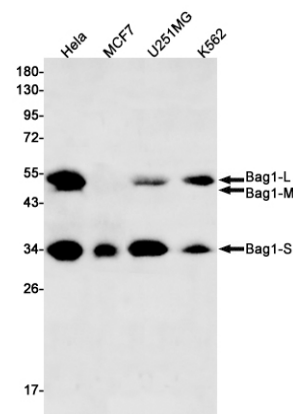
WB: 1/1000

IHC: 1/20

ICC/IF: 1/50

IP: 1/20

## Validations



Western blot detection of Bag1 in HeLa, MCF7, U251MG, K562 cell lysates using Bag1 Rabbit mAb(1:500 diluted). Predicted band size: 39kDa. Observed band size: 52, 46, 33kDa.