

# Anti-FKBP6 Rabbit antibody



Catalog Number: 167741

## Product name

Anti-FKBP6 Rabbit antibody

## Specificity

Human, Mouse, Rat

## Antibody description

FKBP6 Rabbit monoclonal antibody

## Preparation

Antigen: A synthetic peptide of human FKBP6

## Formulation

50nM Tris-Glycine(pH 7.4), 0.15M NaCl,  
40%Glycerol, 0.01% sodium azide and 0.05% BSA

## Storage

Store at 4°C short term. Store at -20°C long term.  
Avoid freeze / thaw cycle.

## Clonality

Monoclonal

## Ig Type

Rabbit IgG

## Applications

WB, IHC-P, FC

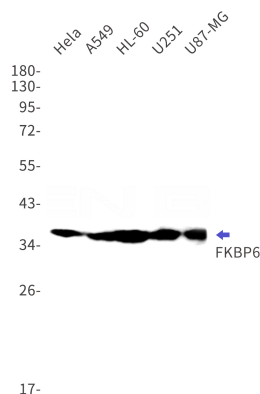
## Dilutions

WB: 1/2000-1/10000

IHC: 1/50

FC: 1/20-1/100

## Validations



Western blot detection of FKBP6 in HeLa,A549,HL-60,U251,U87-MG cell lysates using FKBP6 Rabbit mAb(1:1000 diluted).Predicted band size:37kDa.Observed band size:37kDa.