

# SUPT5H antibody



Catalog Number: 115741

## Product name

SUPT5H antibody

## Immunogen

[Human SUPT5H Recombinant protein \(GST tag\)](#)

## Specificity

Human, Mouse, Rat; other species not tested.

## Antibody description

SUPT5H Rabbit Polyclonal antibody. Positive IF detected in HepG2 cells. Positive IP detected in HeLa cells. Positive WB detected in HeLa cells, HepG2 cells. Observed molecular weight by Western-blot: 140-150 kDa

## Preparation

This antibody was obtained by immunization of SUPT5H recombinant protein (Accession Number: NM\_001130824). Purification method: Antigen affinity purified.

## Formulation

PBS with 0.1% sodium azide and 50% glycerol pH 7.3.

## Storage

Store at -20°C. DO NOT ALIQUOT

## Clonality

Polyclonal

## Ig Type

Rabbit IgG

## Applications

ELISA, WB, IF, IP

## Dilutions

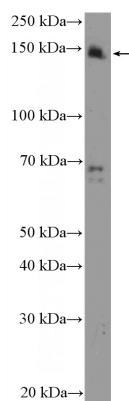
Recommended Dilution:

WB: 1:200-1:2000

IP: 1:200-1:2000

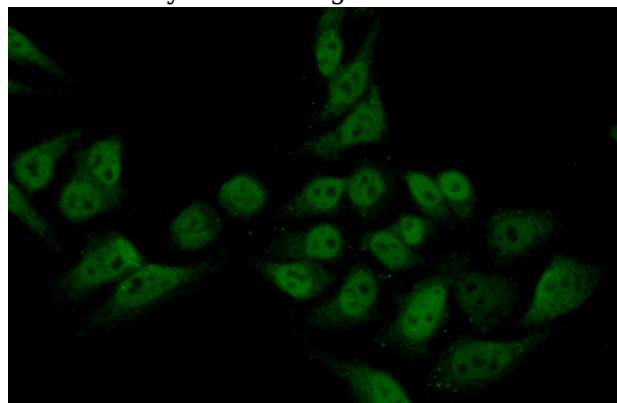
IF: 1:50-1:500

## Validations



HeLa cells were subjected to SDS PAGE followed by western blot with Catalog No:115741(SUPT5H Antibody) at dilution of 1:600

IP Result of anti-SUPT5H (IP:Catalog No:115741, 4ug; Detection:Catalog No:115741 1:500) with HeLa cells lysate 3200ug.



Immunofluorescent analysis of (10% Formaldehyde) fixed HepG2 cells using Catalog No:115741(SUPT5H Antibody) at dilution of 1:50 and Alexa Fluor 488-conjugated AffiniPure Goat Anti-Rabbit IgG(H+L)