

Anti-Ucp1 antibody



Catalog Number: 175741

Product name

Anti-Ucp1 antibody

Specificity

Sheep, Human, Mouse, Rat, Dog, Cow, Horse, Rabbit

Antibody description

Rabbit polyclonal antibody to Ucp1

Preparation

This antigen of this antibody was klh conjugated synthetic peptide derived from human ucp-1 101-200/307

Formulation

Liquid, 0.01M TBS(pH7.4) with 1% BSA, 0.03% Proclin300 and 50% Glycerol.

Storage

Store at -20°C for one year. Avoid repeated freeze/thaw cycles. The lyophilized antibody is stable at room temperature for at least one month and for greater than a year when kept at -20°C. When reconstituted in sterile pH 7.4 0.01M PBS or diluent of antibody the antibody is stable for at least two weeks at 2-4°C.

Clonality

Polyclonal

Ig Type

Rabbit IgG

Applications

WB, FC

Dilutions

WB:1:500-2000

FC:1µg /test

Validations

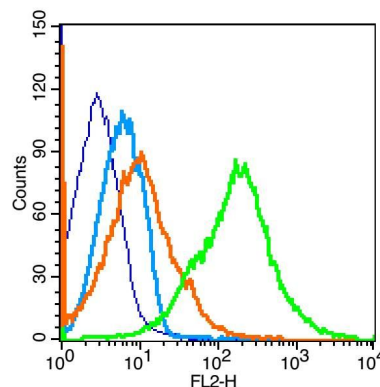


Fig1: Blank control: Mouse spleen (blue).; Primary Antibody: Rabbit Anti-UCP-1 antibody , Dilution: 1µg in 100 µL 1X PBS containing 0.5% BSA;; Isotype Control Antibody: Rabbit IgG(orange) ,used under the same conditions);; Secondary Antibody: Goat anti-rabbit IgG-PE(white blue), Dilution: 1:200 in 1 X PBS containing 0.5% BSA.; Protocol; The cells were fixed with 2% paraformaldehyde (10 min) , then permeabilized with 90% ice-cold methanol for 30 min on ice. Primary antibody (1µg /1x10⁶ cells) were incubated for 30 min on the ice, followed by 1 X PBS containing 0.5% BSA + 10% goat serum (15 min) to block non-specific protein-protein interactions. Then the Goat Anti-rabbit IgG/PE antibody was added into the blocking buffer mentioned above to react with the primary antibody at 1/200 dilution for 30 min on ice. Acquisition of 20,000 events was performed.

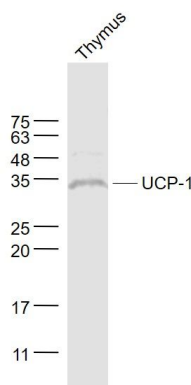


Fig2: Sample;; Thymus (Mouse) Lysate at 40 ug; Primary: Anti- UCP-1 at 1/1000 dilution;

Anti-Ucp1 antibody



Catalog Number: 175741

Secondary: IRDye800CW Goat Anti-Rabbit IgG at 1/20000 dilution; Predicted band size: 33 kD;
Observed band size: 33 kD