

Anti-ADPRH/ADP ribosylarginine hydrolase antibody



Catalog Number: 100741

Product name

Anti-ADPRH/ADP ribosylarginine hydrolase antibody

Immunogen

[Human ADPRH/ADP ribosylarginine hydrolase \(His Tag\) recombinant protein](#)

Specificity

Human ADPRH

Antibody description

Rabbit polyclonal to ADPRH/ADP ribosylarginine hydrolase

Preparation

Produced in rabbits immunized with purified, recombinant Human ADPRH (rh ADPRH; NP_001116.1; Met1-Leu351). ADPRH specific IgG was purified by Human ADPRH affinity chromatography.

Formulation

0.2 µm filtered solution in PBS

Storage

This antibody can be stored at 2°C-8°C for one month without detectable loss of activity. Antibody products are stable for twelve months from date of receipt when stored at -20°C to -80°C. Preservative-Free.

Sodium azide is recommended to avoid contamination (final concentration 0.05%-0.1%). It is toxic to cells and should be disposed of properly. Avoid repeated freeze-thaw cycles.

Clonality

Polyclonal

Ig Type

Rabbit IgG

Applications

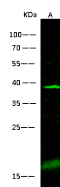
WB, IP

Dilutions

WB: 10-20 µg/ml

IP: 1-4 µg/mg of lysate

Validations



Items	Lanes	A
Sample (whole cell lysate)		K562
Sample Volume (µg/lane)		30
Gel		13% SDS-PAGE reducing gel
Recommended Concentration		10-20 µg/ml
Secondary Antibody		DyLight 800-labeled Antibody to Rabbit IgG (H+L) at 1:5000 dilution
Developed		using Odyssey imaging system
Explanation		Predicted band size: 40 kDa Observed band size: 38 kDa Additional bands at: 17 kDa (We are unsure as to the identity of these extra bands.)

ADPRH Antibody, Rabbit PAb, Antigen Affinity Purified, Western blot