

# ATP1A1-Specific antibody



Catalog Number: 108341

## Product name

ATP1A1-Specific antibody

WB: 1:1000-1:10000

IHC: 1:20-1:200

## Specificity

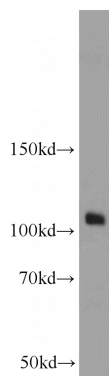
Human, Mouse; other species not tested.

IF: 1:10-1:100

## Antibody description

ATP1A1-Specific Rabbit Polyclonal antibody. Positive FC detected in HEK-293 cells. Positive IF detected in HEK-293 cells. Positive IHC detected in human kidney tissue. Positive WB detected in HeLa cells, HEK-293 cells, HepG2 cells, MCF7 cells, mouse heart tissue, Neuro-2a cells. Observed molecular weight by Western-blot: 113kd

## Validations



## Preparation

This antibody was obtained by immunization of Peptide (Accession Number: NM\_000701). Purification method: Antigen affinity purified.

HeLa cells were subjected to SDS PAGE followed by western blot with Catalog No:108341(ATP1A1 antibody) at dilution of 1:2000

## Formulation

PBS with 0.02% sodium azide and 50% glycerol pH 7.3.

## Storage

Store at -20°C. DO NOT ALIQUOT

## Clonality

Polyclonal

## Ig Type

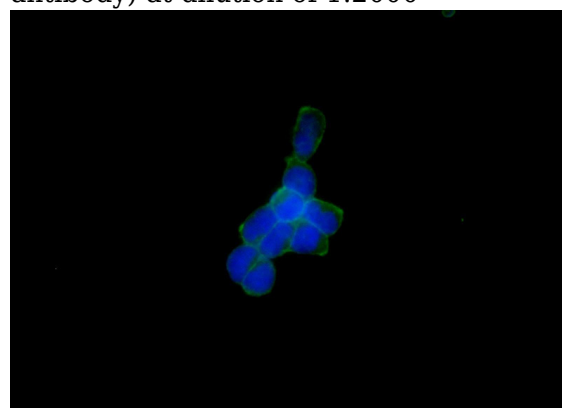
Rabbit IgG

## Applications

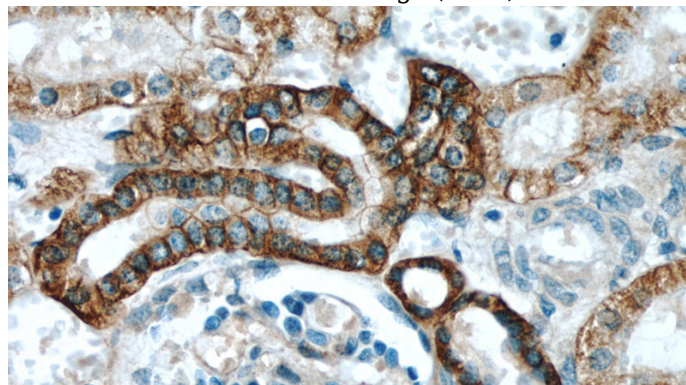
ELISA, WB, IHC, FC, IF

## Dilutions

Recommended Dilution:



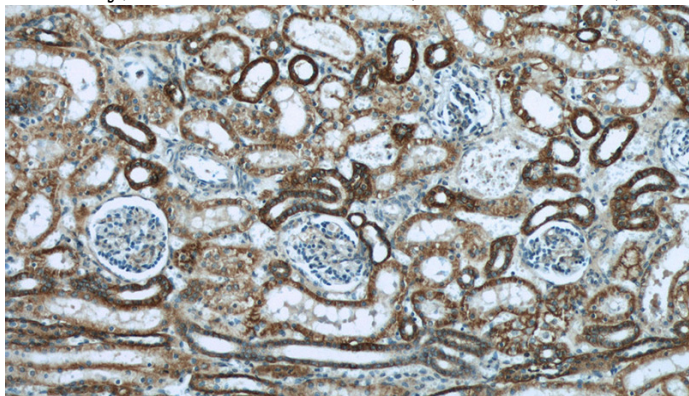
Immunofluorescent analysis of HEK-293 cells using Catalog No:108341(ATP1A1 Antibody) at dilution of 1:25 and Alexa Fluor 488-conjugated AffiniPure Goat Anti-Rabbit IgG(H+L)



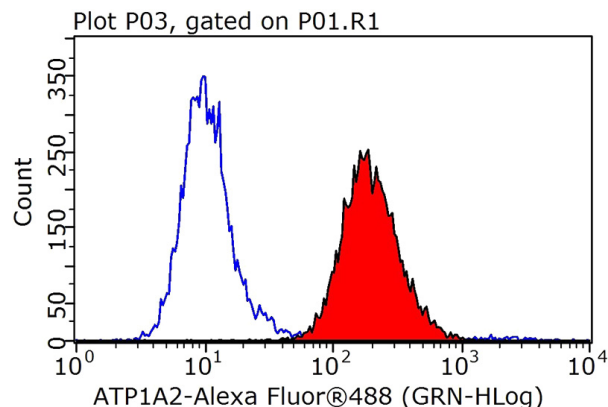
# ATP1A1-Specific antibody

Catalog Number: 108341

Immunohistochemical of paraffin-embedded human kidney using Catalog No:108341(ATP1A1 antibody) at dilution of 1:100 (under 40x lens)



Immunohistochemical of paraffin-embedded human kidney using Catalog No:108341(ATP1A1 antibody) at dilution of 1:100 (under 10x lens)



1X10<sup>6</sup> HEK-293 cells were stained with 0.2ug ATP1A1 antibody (Catalog No:108341, red) and control antibody (blue). Fixed with 90% MeOH blocked with 3% BSA (30 min). Alexa Fluor 488-conjugated AffiniPure Goat Anti-Rabbit IgG(H+L) with dilution 1:1000.