

LRSAM1 antibody



Catalog Number: 112341

Product name

LRSAM1 antibody

IHC: 1:20-1:200

IF: 1:10-1:100

Specificity

Human, Mouse; other species not tested.

Antibody description

LRSAM1 Rabbit Polyclonal antibody. Positive WB detected in Jurkat cells, HepG2 cells, mouse liver tissue. Positive IHC detected in human skeletal muscle tissue. Positive IF detected in A431 cells. Observed molecular weight by Western-blot: 84 kDa

Preparation

This antibody was obtained by immunization of LRSAM1 recombinant protein (Accession Number: NM_138361). Purification method: Antigen affinity purified.

Formulation

PBS with 0.1% sodium azide and 50% glycerol pH 7.3.

Storage

Store at -20°C. DO NOT ALIQUOT

Clonality

Polyclonal

Ig Type

Rabbit IgG

Applications

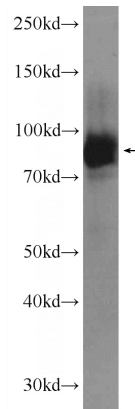
ELISA, WB, IHC, IF

Dilutions

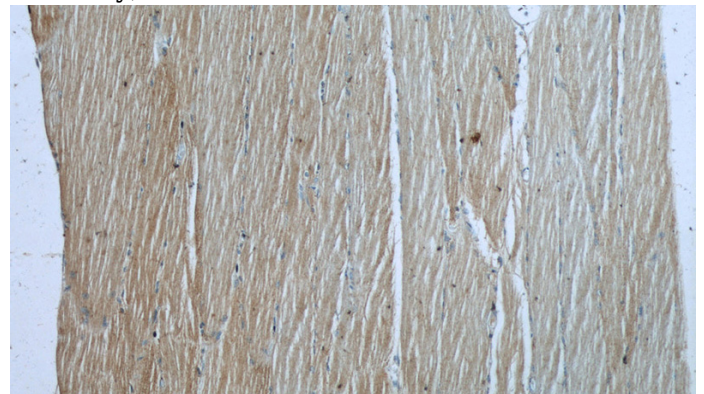
Recommended Dilution:

WB: 1:500-1:5000

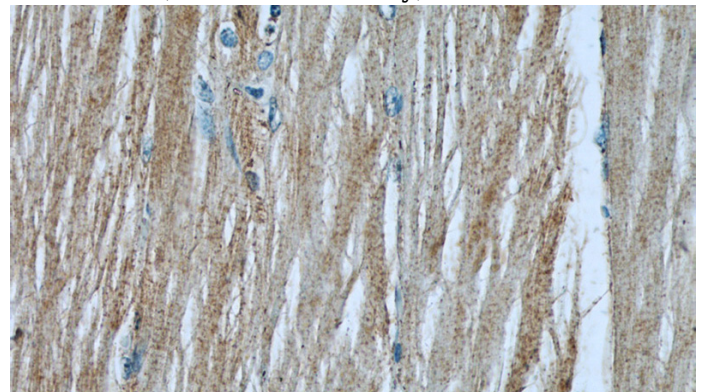
Validations



Jurkat cells were subjected to SDS PAGE followed by western blot with Catalog No:112341(LRSAM1 Antibody) at dilution of 1:1000



Immunohistochemistry of paraffin-embedded human skeletal muscle slide using Catalog No:112341(LRSAM1 Antibody) at dilution of 1:50



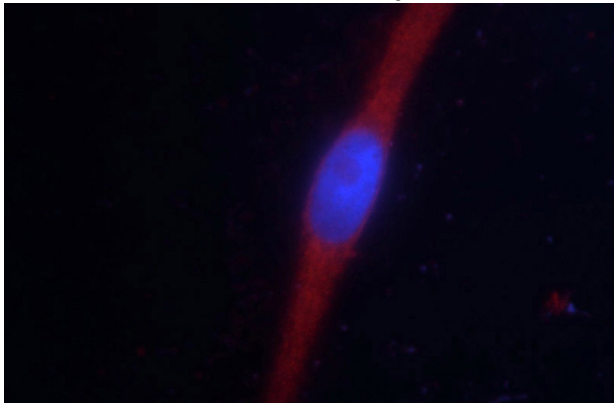
Immunohistochemistry of paraffin-embedded human skeletal muscle slide using Catalog

LRSAM1 antibody



Catalog Number: 112341

No:112341(LRSAM1 Antibody) at dilution of 1:50



Immunofluorescent analysis of A431 cells using Catalog No:112341(LRSAM1 Antibody) at dilution of 1:25 and Rhodamine-Goat anti-Rabbit IgG