

# HIBCH antibody

Catalog Number: 111341

## Product name

HIBCH antibody

IHC: 1:20-1:200

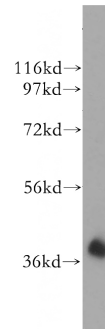
## Specificity

human, mouse, rat; other species not tested.

## Antibody description

HIBCH Rabbit Polyclonal antibody. Positive IHC detected in human liver cancer. Positive WB detected in human brain tissue, human heart tissue, human liver tissue. Observed molecular weight by Western-blot: 38kd

## Validations



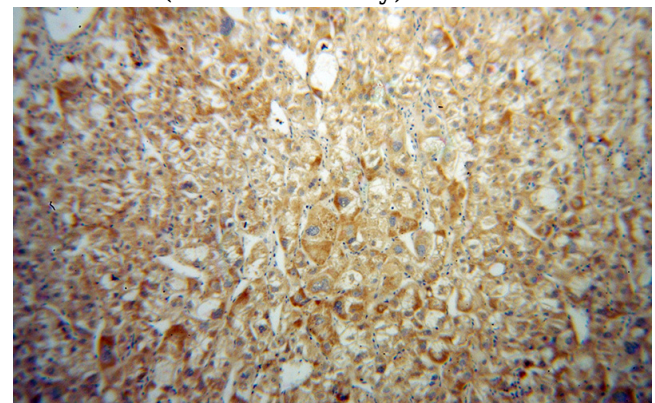
## Preparation

This antibody was obtained by immunization of HIBCH recombinant protein (Accession Number: XM\_011510953). Purification method: Antigen affinity purified.

human brain tissue were subjected to SDS PAGE followed by western blot with Catalog No:111341(HIBCH antibody) at dilution of 1:500

## Formulation

PBS with 0.02% sodium azide and 50% glycerol pH 7.3.



## Storage

Store at -20°C. DO NOT ALIQUOT

## Clonality

Polyclonal

## Ig Type

Rabbit IgG

## Applications

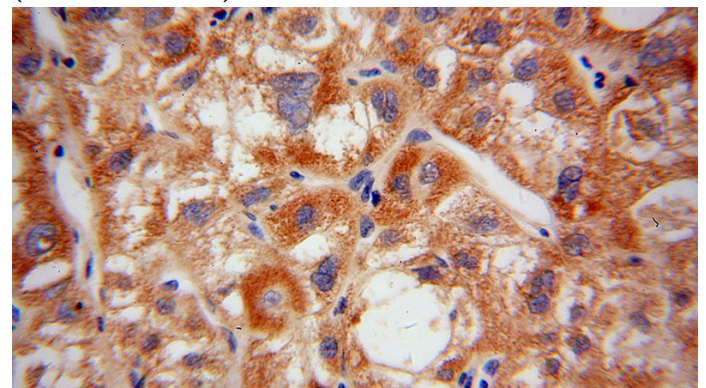
ELISA, WB, IHC

## Dilutions

Recommended Dilution:

WB: 1:1000-1:10000

Immunohistochemical of paraffin-embedded human liver cancer using Catalog No:111341(HIBCH antibody) at dilution of 1:100 (under 10x lens)



Immunohistochemical of paraffin-embedded human liver cancer using Catalog No:111341(HIBCH antibody) at dilution of 1:100

# HIBCH antibody



Catalog Number: 111341

---

(under 40x lens)