

PNLIPRP2 Polyclonal Antibody



Catalog Number: 161341

Product name

PNLIPRP2 Polyclonal Antibody

Specificity

Mouse, Rat

Antibody description

Polyclonal antibody to PNLIPRP2

Preparation

Antigen: Recombinant fusion protein containing a sequence corresponding to amino acids 301-470 of human PNLIPRP2 (NP_005387.2).

Formulation

PBS with 0.02% sodium azide, 50% glycerol, pH7.3.

Storage

Store at -20°C. Avoid freeze / thaw cycles.

Clonality

Polyclonal

Ig Type

Rabbit IgG

Applications

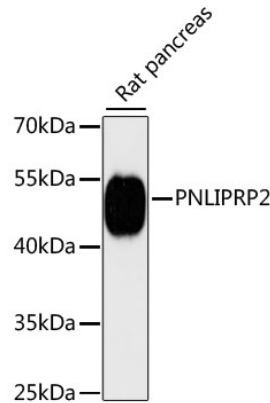
WB, IF

Dilutions

WB 1:500 - 1:1000

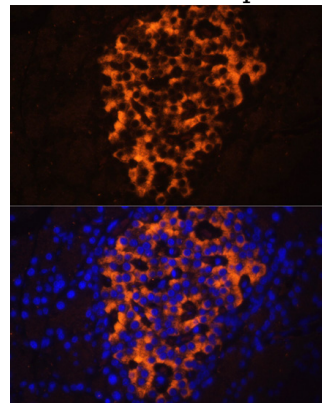
IF 1:50 - 1:200

Validations



Western blot - PNLIPRP2 Polyclonal Antibody

Western blot analysis of extracts of rat pancreas, using PNLIPRP2 antibody at 1:3000 dilution. Secondary antibody: HRP Goat Anti-Rabbit IgG (H+L) at 1:10000 dilution. Lysates/proteins: 25ug per lane. Blocking buffer: 3% nonfat dry milk in TBST. Detection: ECL Enhanced Kit. Exposure time: 90s.



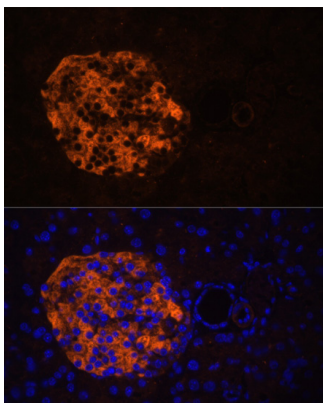
Immunofluorescence - PNLIPRP2 Polyclonal Antibody

Immunofluorescence analysis of rat pancreas using PNLIPRP2 antibody at dilution of 1:100. Blue: DAPI for nuclear staining.

PNLIPRP2 Polyclonal Antibody



Catalog Number: 161341



Immunofluorescence - PNLIPRP2 Polyclonal Antibody

Immunofluorescence analysis of mouse pancreas using PNLIPRP2 antibody at dilution of 1:100.
Blue: DAPI for nuclear staining.