

# CXCL17 antibody



Catalog Number: 109641

## Product name

CXCL17 antibody

## Specificity

Human; other species not tested.

## Antibody description

CXCL17 Rabbit Polyclonal antibody. Positive IHC detected in human breast cancer tissue, human liver cancer tissue.

## Preparation

This antibody was obtained by immunization of CXCL17 recombinant protein (Accession Number: NM\_198477). Purification method: Antigen affinity purified.

## Formulation

PBS with 0.1% sodium azide and 50% glycerol pH 7.3.

## Storage

Store at -20°C. DO NOT ALIQUOT

## Clonality

Polyclonal

## Ig Type

Rabbit IgG

## Applications

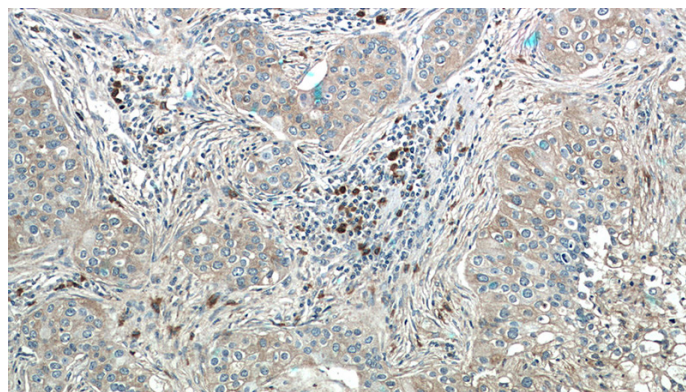
ELISA, IHC

## Dilutions

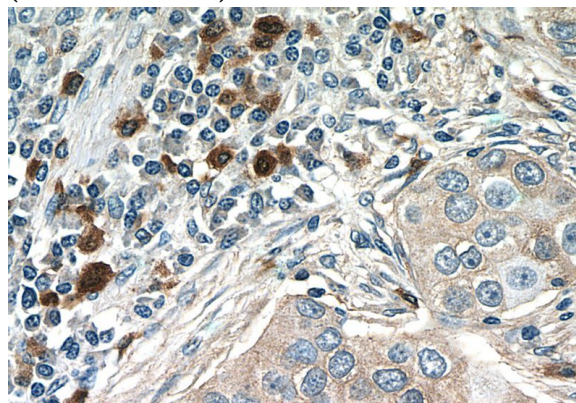
Recommended Dilution:

IHC: 1:20-1:200

## Validations



Immunohistochemistry of paraffin-embedded human breast cancer tissue slide using Catalog No:109641(CXCL17 Antibody) at dilution of 1:50 (under 10x lens)



Immunohistochemistry of paraffin-embedded human breast cancer tissue slide using Catalog No:109641(CXCL17 Antibody) at dilution of 1:50 (under 40x lens)