

# SPR antibody

Catalog Number: 115641

## Product name

SPR antibody

IP: 1:200-1:2000

IF: 1:10-1:100

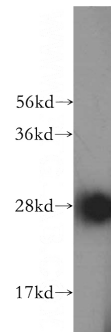
## Specificity

Human, Mouse, Rat; other species not tested.

## Validations

## Antibody description

SPR Rabbit Polyclonal antibody. Positive IF detected in Hela cells. Positive IP detected in mouse liver tissue. Positive WB detected in HepG2 cells, human liver tissue, K-562 cells, rat heart tissue, rat liver tissue. Observed molecular weight by Western-blot: 28 kDa



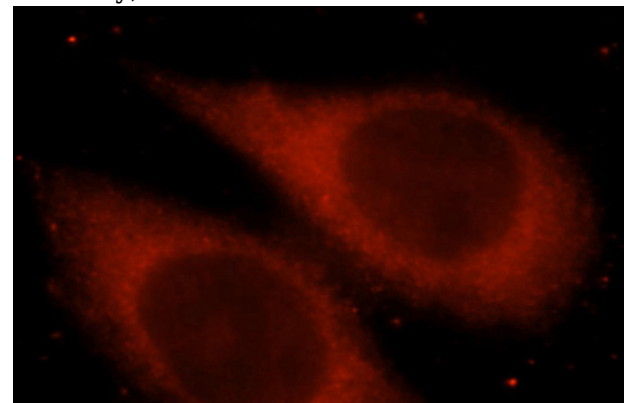
## Preparation

This antibody was obtained by immunization of SPR recombinant protein (Accession Number: NM\_003124). Purification method: Antigen affinity purified.

HepG2 cells were subjected to SDS PAGE followed by western blot with Catalog No:115641 (SPR antibody) at dilution of 1:500

## Formulation

PBS with 0.02% sodium azide and 50% glycerol pH 7.3.



## Storage

Store at -20°C. DO NOT ALIQUOT

## Clonality

Polyclonal

Immunofluorescent analysis of Hela cells, using SPR antibody Catalog No:115641 at 1:25 dilution and Rhodamine-labeled goat anti-rabbit IgG (red).

## Ig Type

Rabbit IgG

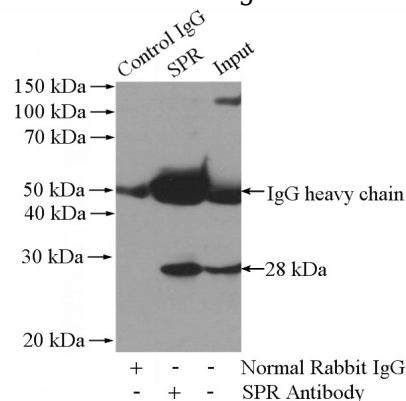
## Applications

ELISA, WB, IF, IP

## Dilutions

Recommended Dilution:

WB: 1:500-1:5000



IP Result of anti-SPR (IP:Catalog No:115641, 4ug; Detection:Catalog No:115641 1:500) with mouse

# SPR antibody



Catalog Number: 115641

---

liver tissue lysate 4000ug.