

Anti-ENSA / Endosulfine alpha antibody



Catalog Number: 104641

Product name

Anti-ENSA / Endosulfine alpha antibody

Immunogen

[Human ENSA / Endosulfine alpha \(His Tag\) recombinant protein](#)

Specificity

Human ENSA / Endosulfine alpha

Antibody description

Rabbit polyclonal to ENSA / Endosulfine alpha

Preparation

Produced in rabbits immunized with purified, recombinant Human ENSA / Endosulfine alpha (rh ENSA / Endosulfine alpha; O43768-1; Met1-Glu121). ENSA / Endosulfine alpha specific IgG was purified by Human ENSA / Endosulfine alpha affinity chromatography.

Formulation

0.2 µm filtered solution in PBS

Storage

This antibody can be stored at 2°C-8°C for one month without detectable loss of activity. Antibody products are stable for twelve months from date of receipt when stored at -20°C to -80°C.

Preservative-Free.

Sodium azide is recommended to avoid contamination (final concentration 0.05%-0.1%). It is toxic to cells and should be disposed of properly. Avoid repeated freeze-thaw cycles.

Clonality

Polyclonal

Ig Type

Rabbit IgG

Applications

ELISA, WB, IP

Dilutions

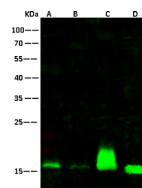
WB: 1-10 µg/ml

ELISA: 0.1-0.2 µg/mL

This antibody can be used at 0.1-0.2 µg/mL with the appropriate secondary reagents to detect Human ENSA / Endosulfine alpha. The detection limit for Human ENSA / Endosulfine alpha is < 0.039 ng/well.

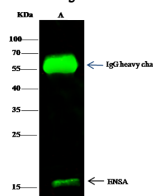
IP: 4-6 µg/mg of lysate

Validations



Items	Lanes	A	B	C	D
Sample		Mouse heart tissue lysate	Rat heart tissue lysate	Mouse brain tissue lysate	A549 (whole cell lysate)
Sample Volume (µg/lane)		30	30	30	30
Gel	13% SDS-PAGE reducing gel				
Recommended Concentration	1-10 µg/ml				
Secondary Antibody	Dylight 800-labeled Antibody To Rabbit IgG (H+L), at 1:5000 dilution. Developed using Odyssey imaging system.				
Explanation	Predicted band size : 28 kDa Observed band size : 26 kDa Additional bands at : 55 kDa and 36 kDa (We are unsure as to the identity of these extra bands. They are possible non-specific bindings).				

ENSA / Endosulfine alpha Antibody, Rabbit PAB, Antigen Affinity Purified, Western blot



Items	Lanes	A
Sample (whole cell lysate)		A549
Sample quantity		0.5 mg
IP antibody quantity		2 µg
Protein G agarose		15 µl of 50% Protein G Agarose
Gel	13% SDS-PAGE reducing gel	
Primary antibody	HIS-ENSA antibody at 5 µg/ml	
Secondary antibody	Dylight 800-labeled antibody to rabbit IgG (H+L), at 1:5000 dilution	

ENSA / Endosulfine alpha Antibody, Rabbit PAB, Antigen Affinity Purified, Immunoprecipitation