

PRR13 antibody

Catalog Number: 114241

Product name

PRR13 antibody

Specificity

Human; other species not tested.

Antibody description

PRR13 Rabbit Polyclonal antibody. Positive IHC detected in human breast cancer tissue, human prostate cancer tissue. Positive WB detected in MCF-7 cells. Observed molecular weight by Western-blot: ~20 kDa

Preparation

This antibody was obtained by immunization of PRR13 recombinant protein (Accession Number: NM_018457). Purification method: Antigen affinity purified.

Formulation

PBS with 0.1% sodium azide and 50% glycerol pH 7.3.

Storage

Store at -20°C. DO NOT ALIQUOT

Clonality

Polyclonal

Ig Type

Rabbit IgG

Applications

ELISA, IHC, WB

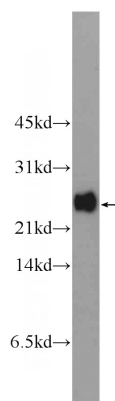
Dilutions

Recommended Dilution:

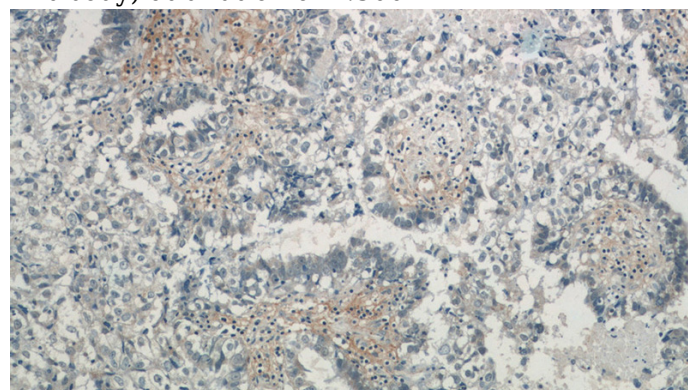
WB: 1:200-1:1000

IHC: 1:20-1:200

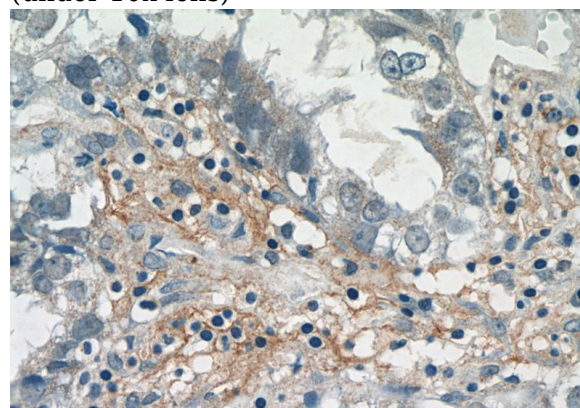
Validations



MCF-7 cells were subjected to SDS PAGE followed by western blot with Catalog No:114241(PRR13 Antibody) at dilution of 1:300



Immunohistochemistry of paraffin-embedded human breast cancer tissue slide using Catalog No:114241(PRR13 Antibody) at dilution of 1:50 (under 10x lens)



Immunohistochemistry of paraffin-embedded human breast cancer tissue slide using Catalog No:114241(PRR13 Antibody) at dilution of 1:50

PRR13 antibody



Catalog Number: 114241

(under 40x lens)