

Anti-OLIG1 antibody



Catalog Number: 100241

Product name

Anti-OLIG1 antibody

Specificity

Human OLIG1

Antibody description

Rabbit polyclonal to OLIG1

Preparation

Produced in rabbits immunized with a synthetic peptide corresponding to the center region of the human OLIG1, and purified by antigen affinity chromatography.

Formulation

0.2 µm filtered solution in PBS

Storage

This antibody can be stored at 2°C-8°C for one month without detectable loss of activity. Antibody products are stable for twelve months from date of receipt when stored at -20°C to -80°C.

Preservative-Free.

Sodium azide is recommended to avoid contamination (final concentration 0.05%-0.1%). It is toxic to cells and should be disposed of properly. Avoid repeated freeze-thaw cycles.

Clonality

Polyclonal

Ig Type

Rabbit IgG

Applications

WB, IF, IP, ICC/IF

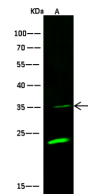
Dilutions

WB: 10-30 µg/ml

ICC/IF: 0.5-1.5 µg/ml

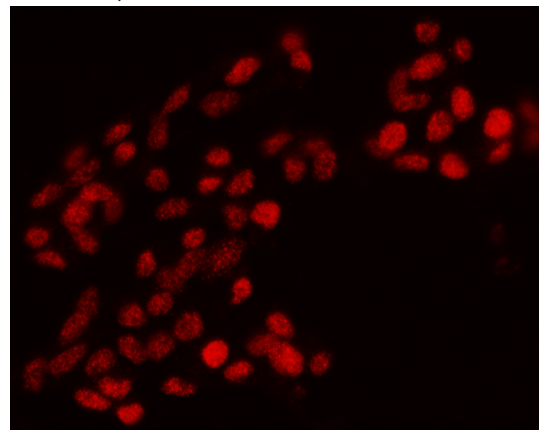
IP: 1-4 µg/mg of lysate

Validations



Items	Lanes	A
Sample (whole cell lysate)		293T
Sample Volume (µg/lane)		30
Gel		13%SDS-PAGE reducing gel
Recommended Concentration		10-30µg/ml
Secondary Antibody		Dylight 800-labeled Antibody To Rabbit IgG (H+L), at 1:5000 dilution.
Explanation		Developed using Odyssey imaging system. Predicted band size : 27 kDa Observed band size : 35 kDa Additional bands at : 23 kDa (We are unsure as to the identity of these extra bands. They are possible non-specific bindings).

OLIG1 Antibody, Rabbit PAb, Antigen Affinity Purified, Western blot



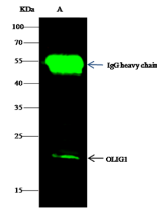
OLIG1 Antibody, Rabbit PAb, Antigen Affinity Purified, Immunofluorescence

Immunofluorescence staining of OLIG1 in SHSY5Y cells. Cells were fixed with 4% PFA, permeabilized with 0.3% Triton X-100 in PBS, blocked with 10% serum, and incubated with rabbit anti-human OLIG1 polyclonal antibody (1 µg/ml) at 4°C overnight. Then cells were stained with the Alexa Fluor® 594-conjugated Goat Anti-rabbit IgG secondary antibody (red). Positive staining was

Anti-OLIG1 antibody



Catalog Number: 100241



OLIG1 Antibody, Rabbit PAb, Antigen Affinity Purified, Immunoprecipitation

Immunochemical staining of human TROP2 in human prostate with rabbit polyclonal antibody (1 $\mu\text{g}/\text{mL}$, formalin-fixed paraffin embedded sections).

Item	Lane	A
Sample (whole cell lysate)		Hela
Sample quantity		0.5 mg
IP antibody quantity		2 μg
Protein G agarose		15 μl of 50% Protein G Agarose
Gel		13% SDS-PAGE reducing gel
Primary antibody		KLH-SMCC-sinoA577 antibody at 10 $\mu\text{g}/\text{ml}$
Secondary antibody		Dylight 800-labeled antibody to rabbit IgG (H+L), at 1:5000 dilution.

localized to nucleus.