

Anti-Ras Rabbit antibody



Catalog Number: 167941

Product name

Anti-Ras Rabbit antibody

Specificity

Human, Mouse, Rat

Antibody description

Ras Rabbit monoclonal antibody

Preparation

Antigen: A synthetic peptide of human Ras

Formulation

50nM Tris-Glycine(pH 7.4), 0.15M NaCl, 40%Glycerol, 0.01% sodium azide and 0.05% BSA

Storage

Store at 4°C short term. Store at -20°C long term. Avoid freeze / thaw cycle.

Clonality

Monoclonal

Ig Type

Rabbit IgG

Applications

WB, FC, IP

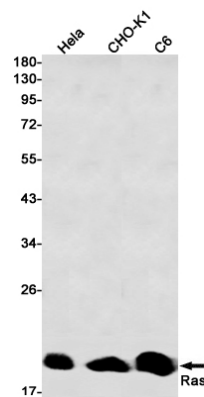
Dilutions

WB: 1/2000-1/10000

FC: 1/20

IP: 1/20

Validations



Western blot detection of Ras in HeLa,CHO-K1,C6 cell lysates using Ras Rabbit mAb(1:1000 diluted).Predicted band size:21kDa.Observed band size:21kDa.